

CATALOGUE
AGRICULTURAL MACHINERY



CONTENTS

 PAGE 3

TECHNOLOGY SELECTION CRITERIA

 PAGE 6

TRACTORS

- WHEEL-TYPE TRACTORS
 - TRACK-TYPE TRACTORS
-

 PAGE 20

IMPLEMENTS

- SOIL CULTIVATION:
 - PLOWS
 - CULTIVATORS
 - COMBINATIONS
 - SUBSOILERS
 - DISC HARROWS
 - ROTARY HARROWS
 - SEEDING AND PLANTING:
 - SEED DRILLS
 - FERTILIZING & PEST CONTROL:
 - SPRAYERS
 - FERTILIZER SPREADERS
 - HAY MAKING:
 - MOWERS
 - HAY RAKES
 - BALERS
 - BALE WRAPPERS
 - HARVESTING:
 - HEADERS
 - ACCESSORIES
-

 PAGE 70

COMBINE HARVESTERS

- CORN HARVESTERS
 - FORAGE HARVESTER
-



CATALOGUE

AGRICULTURAL MACHINERY



AGROMASH-HOLDING IS A RELIABLE PARTNER IN AGRIBUSINESS

AGROMASH-HOLDING, A SPECIALIZED UNIT OF THE RUSSIA'S LARGEST MACHINE BUILDING HOLDING "TRACTOR PLANTS CONCERN", IS AMONG THE LEADERS OF THE RUSSIAN AGRIBUSINESS OFFERING INNOVATIVE AGRICULTURAL SOLUTIONS TO AGRO-INDUSTRY BASED ON MACHINES BUILT BY THE CONCERN'S COMPANIES: KRASNOYARSK COMBINE PLANT, ALTAISK ENGINE PLANT, VLADIMIR ENGINE & TRACTOR PLANT, GROUP OF COMPANIES VOLGOGRAD TRACTOR PLANT AND RUSAGROMASH.

SINCE 2009 ALL OUR PRODUCTS ARE MANUFACTURED UNDER AGROMASH BRAND.

QUALITY CONTROL AT ALL MANUFACTURING SITES, SUPPLIER QUALITY CONTROL AND PREDELIVERY INSPECTION ENSURES HIGH RELIABILITY OF AGRICULTURAL MACHINES.

WE OFFER END-TO-END AFTERSALES SERVICING.

TODAY THERE ARE OVER 100 REGIONAL SERVICE CENTERS TO MEET THE NEEDS OF OUR CUSTOMERS PROMPTLY AND SKILLFULLY.

IN 2009 WE ESTABLISHED AGROMASH ACADEMY WITHIN THE COMPANY TO LAUNCH A MULTILEVEL TRAINING AND SKILL DEVELOPMENT PROGRAM FOR HUMAN RESOURCES OF THE RUSSIAN AGRO-INDUSTRY. THE MAIN TARGET OF THIS EDUCATIONAL PROJECT IS TO OFFER ASSISTANCE IN THE FORM OF TRAININGS, CONSULTATIONS AND TUTORIALS BY AGROMASH-HOLDING SPECIALISTS TO EDUCATIONAL FACILITIES AND CUSTOMERS IN RUSSIA AND CIS COUNTRIES.

AGROMASH-HOLDING IS ALWAYS OPEN TO MUTUALLY BENEFICIAL COOPERATION WITH NEW PARTNERS. WE VALUE OUR CUSTOMERS, PRIORITIZE LONG-TERM RELATIONS AND OFFER THE MOST FAVOURABLE CONDITIONS FOR CLOSING OF DEALS AS WELL AS FOR AFTERSALES SERVICING.



TECHNOLOGY SELECTION CRITERIA

TODAY THE COMPOSITION OF THE TRACTOR AND MACHINE FLEET OF AN INDIVIDUAL FARMSTEAD IS PERHAPS A MOST TOPICAL ISSUE. THE URGE TO KEEP CROPPING COSTS AS LOW AS POSSIBLE REQUIRES NEW APPROACHES TO OPTIMIZATION OF TRACTOR AND IMPLEMENT COMBINATIONS, WHICH ARE BASED ON NEW AGROTECHNOLOGICAL PRINCIPLES. IN THE PAST, THE MACHINERY SELECTION WAS DOMINATED BY AGROTECHNOLOGICAL OPERATIONS WHICH USED TO BE MORE OR LESS STANDARDIZED INTO A COMMON PROCESS CHART APPLICABLE TO ALL AGRO-CLIMATIC ZONES OF RUSSIA. NOW THE TRACTOR AND IMPLEMENT COMBINATIONS ARE SELECTED TO MATCH THE LAND PLOT SIZE. AT THE SAME TIME, OPTIMIZATION OF THE TRACTOR FLEET RESULTS IN VERSATILITY OF POWERFUL MACHINES THAT IN THE PAST WERE THOUGHT TO BE INTENDED EXCLUSIVELY FOR THE MAIN TILLAGE OPERATION – MOLDBOARD PLOWING. NOWADAYS, THESE MACHINES ARE LARGELY USED FOR SEEDBED PREPARATION, PLANTING AND HARVESTING. TODAY THE TRACTOR AND MACHINE FLEET CONSISTING ONLY OF A CATEGORY 6 TRACTOR AND MAXIMUM FOUR CATEGORY 1.4 TRACTORS FOR 1 000 HA OF ARABLE LAND IS OPTIMAL TO SUIT ANY RUSSIAN FARM.

CURRENTLY IMPLEMENTS HAVE THE FOLLOWING LIMITATIONS:

- NO LARGE-SCALE ROW CROP PLANTERS AVAILABLE (THE AVAILABLE PLANTERS ARE SUITABLE FOR MAKING FULL USE OF TRACTORS OF UP TO 150–210 HP).
- NO PLANT PROTECTION IMPLEMENTS SUITABLE FOR CATEGORY 3–6 TRACTORS.

MAIN OPTIONS OF MACHINERY SELECTION:

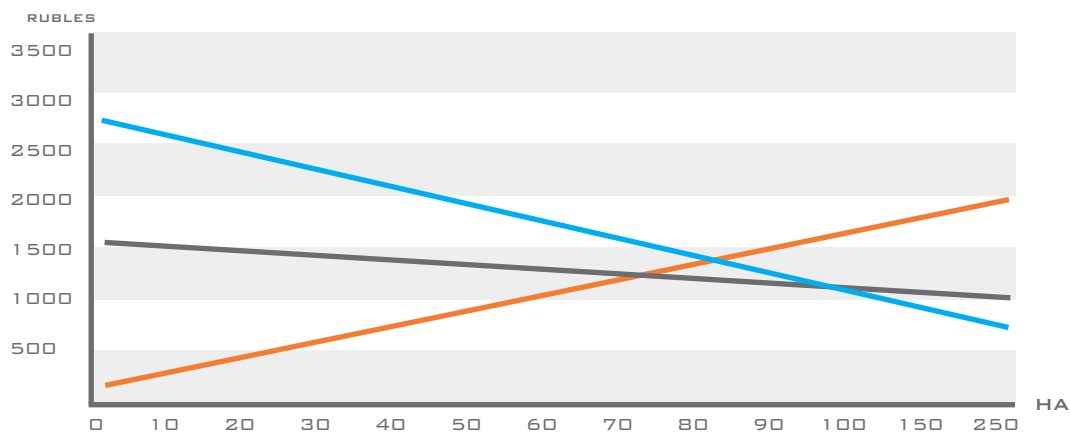
- FARMS GROWING CEREALS (WHEAT, BARLEY, OATS, ETC) WITH LARGE LAND PLOTS (120 HA AND MORE).

TRACTORS WITH HIGH PULLING POWER ARE REQUIRED. IF SOIL AND CLIMATE MAKES IT POSSIBLE TO TRANSIT FROM THE CONVENTIONAL CROP PRODUCTION TO MINIMUM OR ZERO TILLAGE (WITH YIELD PERFORMANCE OF UP TO 45 DT/HA) THESE TRACTORS COUPLED WITH LARGE-SCALE PLANTING COMBINATIONS BECOME PREVAILING.

SUCH FARMS CAN ALSO BENEFIT FROM REPLACING TRAILED PEST CONTROL IMPLEMENTS WITH SELF-PROPELLED MACHINES. THIS APPROACH HELPS REDUCE COSTS AND FINAL COST PRICE OF THE CROP BY 40–60 % COMPARED TO A CONVENTIONAL WAY.

- FARMS WITH AT LEAST 30–40 % ROW CROP SHARE OF THE TOTAL ARABLE LAND.

IN THIS CASE THE OPERATION WILL BE LIMITED TO USE OF ROW CROP PLANTERS FOR CATEGORY 1.4–2 TRACTORS. HOWEVER, SUCH TILLAGE OPERATIONS LIKE MOLDBOARD PLOWING MAY REQUIRE EITHER MORE TRACTORS OF THIS CATEGORY OR CATEGORY 3–5 TRACTORS IN THE FLEET. AVAILABILITY OF LARGE-SCALE ROW CROP PLANTERS FOR TRACTORS OF UP TO 180–210 HP WILL RESULT IN PREFERENCE GIVEN TO CATEGORY 3 OR 4 TRACTORS. WHILE SELECTING THE TRACTOR AND IMPLEMENT COMBINATION, A SPECIAL ATTENTION SHALL BE PAID TO PLANTING AND HARVESTING TERMS. AS A RULE, AGROCLIMATIC CONSTRAINTS REQUIRE TO HANDLE PLANTING WITHIN EXTREMELY LIMITED TIMEFRAME BOTH IN SPRING AND IN AUTUMN. THAT IS WHY ANY CALCULATION SHALL TAKE INTO ACCOUNT THE PERFORMANCE OF A TRACTOR AND IMPLEMENT COMBINATION: HIGHER SPEED AND BIGGER WIDTH MEAN HIGHER PERFORMANCE. BUT THE OPTIMAL WIDTH OF THE IMPLEMENT DEPENDS ON THE LAND PLOT SIZE: IF THE LAND PLOT IS UNDER 60 HA (THE AVERAGE LENGTH OF A FURROW IS LESS THAN 300 M), THE USE OF IMPLEMENTS WITH A LARGE WORKING WIDTH (MORE THAN 8 M) IS NOT COST EFFECTIVE DUE TO LOSSES RESULTING FROM TURNS AND LOW MANEUVERABILITY OF LARGE-SCALE IMPLEMENTS. ON THE CONTRARY, IMPLEMENTS WITH A LARGE WORKING WIDTH OFFER ADVANTAGES ON THE LAND PLOT OF OVER 150 HA DUE TO FEWER MACHINES REQUIRED AND LESS LOSSES RESULTING FROM DOWNTIME AND TURNS.



THEREBY, A DECISION MAKING PROCESS ABOUT THE TRACTOR AND MACHINE FLEET MAY INVOLVE SEVERAL STAGES!

- CROP ROTATION, CROP TO BE GROWN – DEFINITION OF TIMEFRAME FOR SOIL CULTIVATION AND PLANTING.
- LAND PLOT SIZE – OPTIMAL WORKING WIDTH OF AN IMPLEMENT TO SUIT THE TIMING.
- OPTIMAL WORKING WIDTH – OPTIMAL TRACTOR.
- TRACTOR – THE WIDEST SCOPE OF AGROTECHNOLOGICAL APPLICATIONS AND THE WIDEST RANGE OF IMPLEMENTS COMPATIBLE WITH THIS TRACTOR.
- DEFINITION OF THE REQUIRED NUMBER OF TRACTOR AND IMPLEMENT COMBINATIONS FOR THE FARM’S TOTAL ARABLE LAND.

GUIDED BY THESE FACTORS AGROMASH-HOLDING OFFERS EACH CUSTOMER A TAILORED APPROACH TO SELECTING TRACTOR AND MACHINE FLEET WHICH HELPS MAKE FULL USE OF FARM’S POTENTIAL AND ACHIEVE THE BEST FINANCIAL PERFORMANCE.

DIRECT COST PRICE OF CROPS VERSUS IMPLEMENT WORKING WIDTH AND LAND PLOT SIZE

LAND PLOT SIZE	DEMAND IN TRACTORS FOR 1000 HA OF ARABLE LAND DEPENDING ON THE LAND PLOT SIZE TO COVER BASIC CEREAL AND ROW CROPPING APPLICATIONS					TOTAL
	1,4T	2T	3T	4T	5T	
	4,76	0,00	0,00	0,00	0,00	4,76
	3,71	0,00	0,00	0,00	0,00	3,71
	2,26	2,38	0,00	0,00	0,00	4,64
	4,76	1,58	1,90	0,00	0,00	8,24
	3,10	0,00	1,90	0,00	0,00	5,00
	3,10	0,00	1,37	1,36	0,00	5,82
	3,10	0,00	0,00	1,37	0,00	4,46
	3,10	0,00	0,00	0,93	1,06	5,00
	3,10	0,00	0,00	0,00	1,06	4,15
	0,00	1,55	0,00	0,00	1,06	2,61
	0,00	1,55	0,00	0,00	1,06	2,61
150 HA AND MORE	0,00	0,00	1,03	0,00	1,06	2,09



TRACTORS

WHEEL-TYPE TRACTORS TRACK-TYPE TRACTORS



AGRICULTURAL TRACTORS MADE BY AGROMASH-HOLDING ARE COMPATIBLE WITH A WIDE RANGE OF STATE-OF-THE-ART MACHINES AND IMPLEMENTS, AND CAN BE EFFICIENTLY USED FOR PLANT AND LIVESTOCK BREEDING.

LOW SPECIFIC GROUND PRESSURE AND ENHANCED CROSS-COUNTRY ABILITY OF TRACK-TYPE AND WHEEL TRACTORS ENABLE TO ACCOMPLISH FIELD WORKS WITHIN OPTIMAL TIMEFRAME.

OUR TRACTORS FEATURE MODERN DESIGN. THEY ARE EQUIPPED WITH SAFE AND SOUNDPROOF CABS OFFERING COMFORT AND ENHANCED VISIBILITY OF THE WORKING AREA. EACH MODEL IS FITTED WITH A HEATING AND VENTILATION SYSTEM.

WHEEL-TYPE TRACTORS

30 TK
50 TK
60 TK
85 TK
50 SSH

TRACK-TYPE TRACTORS

90 TG
150 TG

TRACK-TYPE TRACTORS

315 TG

POWER
PERFORMANCE
SIMPLICITY
COMFORT



AGROMASH 30TK



VERSATILE ROW CROP TRACTOR

VERSATILE ROW CROP TRACTOR IS INTENDED FOR A WIDE ARRAY OF AGRICULTURAL, UTILITY AND TRANSPORT APPLICATIONS.



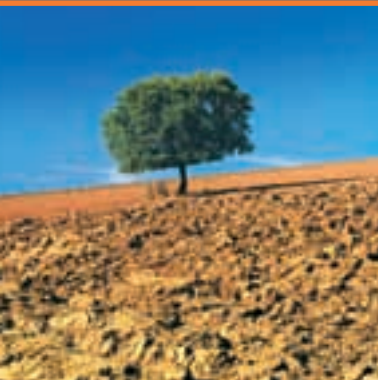
SPECIFICATIONS

AGROMASH	30TK
ENGINE	DIESEL D 120, 4-STROKE, 2-CYLINDER
NORMAL RATED POWER [kW (HP)]	22.1 (30)
SPECIFIC FUEL CONSUMPTION [g/kWh (g/HPH)]	245 (180)
POWER TAKE-OFF [TYPE, RPM]	INDEPENDENT, 540
FRONT AXLE	DRIVE AXLE
STEERING	HYDROSTATIC
HITCH LIFT CAPACITY AT HITCH LIFT POINT [KG]	1000
DIMENSIONS [MM]	3320x1660x2570
OPERATING WEIGHT [KG]	2500
COOLING SYSTEM	AIR COOLING
ENGINE SPEED [RPM]	2000
SPEED RANGE [KM/H]	1.5 TO 23.86
FORWARD/REVERSE GEARS	8/6
CLEARANCE [MM]	370
CAB	ONE-SEAT, FRAME-TYPE, HEATED, VENTILATED, ILLUMINATED, FITTED WITH WINDOW WIPERS AND REAR VIEW MIRRORS

AGROMASH 50 TK

VERSATILE ROW CROP TRACTOR

ALL WHEEL DRIVE VERSATILE POWERFUL TRACTOR. IN COMBINATION WITH IMPLEMENTS IT IS INTENDED FOR AGRICULTURAL, LOADING/UNLOADING AND TRANSPORT APPLICATIONS. THE TRACTOR MAY BE OPTIONALLY FITTED WITH A CAB, A SAFETY FRAME OR A CANVAS COVER. ENHANCED VISIBILITY OF THE WORKING AREA. MODERN DESIGN. COMFORTABLE CAB.



SPECIFICATIONS

HEAVY-DUTY HYDRAULIC HITCH. TURBOCHARGED AIR-COOLED DIESEL ENGINE D130T-10 COMPLIES WITH REQUIREMENTS OF UN ECE REGULATION 96-01 ON EXHAUST GAS EMISSION AND MEETS EURO II EMISSION STANDARD.

AGROMASH	50 TK
ENGINE	DIESEL D130, 4-STROKE, 3-CYLINDER
NORMAL RATED POWER [kW (HP)]	33.1 (45)
SPECIFIC FUEL CONSUMPTION [G/KWH (G/HPH)]	241 (177)
POWER TAKE-OFF [RPM]	540
HITCH LIFT CAPACITY AT HITCH LIFT POINT [KG]	1 200
DIMENSIONS INCLUDING HITCH [MM]	3740x1660x2540
OPERATING WEIGHT [KG]	2600
COOLING SYSTEM	AIR COOLING / LIQUID COOLING
ENGINE SPEED [RPM]	2000
DRAWBAR CATEGORY	0.9
SPEED RANGE [KM/H]	1.5 TO 23.86
CLEARANCE [MM]	347
CAB	ONE-SEAT, FRAME-TYPE, HEATED, VENTILATED, ILLUMINATED, FITTED WITH WINDOW WIPERS AND REAR VIEW MIRRORS

AGROMASH 60 TK

VERSATILE ROW CROP TRACTOR

ALL WHEEL DRIVE VERSATILE TRACTOR FEATURES A MODERN DESIGN AND ENHANCED VISIBILITY OF THE WORKING AREA. IN COMBINATION WITH IMPLEMENTS IT IS INTENDED FOR AGRICULTURAL, LOADING/UNLOADING AND TRANSPORT APPLICATIONS.



SPECIFICATIONS

SYNCHRONIZED TRANSMISSION, HYDRAULICALLY-OPERATED MONOBLOCK HITCH WITH DRAFT AND POSITION CONTROL, AUXILIARY THREE-SECTION CONTROL VALVE TO DELIVER POWER TO HYDRAULICALLY-OPERATED WORK TOOLS AND IMPLEMENTS COUPLED WITH THE TRACTOR.

MAXIMUM DRIVING SPEED 37.72 KM/H.

HEAVY-DUTY FRONT WHEELS (12.4 R24).

AUTOMATIC FRONT WHEEL DRIVE ENGAGEMENT/DISENGAGEMENT.

AGROMASH	60 TK
ENGINE	SISU 33 DTA; VMTZ D-130
NORMAL RATED POWER [KW (HP)]	44.1 (60)
SPECIFIC FUEL CONSUMPTION [G/KWH (G/HPH)]	213(156,8)/241(177)
HITCH LIFT CAPACITY AT HITCH LIFT POINT [KG]	3000
DIMENSIONS INCLUDING HITCH [MM]	3900x1800x2600
OPERATING WEIGHT [KG]	3800
COOLING SYSTEM	AIR COOLING / LIQUID COOLING
ENGINE SPEED [RPM]	2100
SPEED RANGE [KM/H]	1.4 to 37.72
FRONT AXLE	DRIVE AXLE
CAB	ONE-SEAT, FRAME-TYPE, HEATED, VENTILATED, ILLUMINATED, FITTED WITH WINDOW WIPERS AND REAR VIEW MIRRORS

SELF-PROPELLED CHASSIS

VERSATILE, MASS-PRODUCED FOUR-WHEEL FRAMED MACHINE. THIS MACHINE IS DESIGNED AS A UNIVERSAL VEHICLE AND AS A POWERPLANT FOR IMPLEMENTS USED FOR VARIOUS APPLICATIONS.



SPECIFICATIONS

THE CHASSIS SHARES COMMON COMPONENTS WITH AGROMASH 30TK TRACTOR. UNLIKE AGROMASH 30TK, THE CHASSIS HAS A DIESEL ENGINE AND POWER TRAIN IN THE REAR, WHILE ITS FRONT IS A FRAME INTENDED FOR MOUNTING A PLATFORM, IMPLEMENTS OR MACHINES. SUCH ARRANGEMENT ENSURES A GOOD VISIBILITY AND HELPS ACTIVELY CONTROL THE WORKING PROCESS.

AGROMASH	50 SSH
ENGINE	DIESEL D130, 4-STROKE, 3-CYLINDER
NORMAL RATED POWER [kW (HP)]	33,1 (45)
SPECIFIC FUEL CONSUMPTION [g/kWh (g/HPH)]	241 (177)
HITCH LIFT CAPACITY AT HITCH LIFT POINT [KG]	1000
DIMENSIONS [MM]	4190x1630x2570
OPERATING WEIGHT [KG]	2440
COOLING SYSTEM	AIR COOLING
ENGINE SPEED [RPM]	2000
FRONT AXLE	DRIVEN, PORTAL AXLE
SPEED RANGE [KM/H]	5.39 TO 23.86
WHEELBASE [MM]	2500
CAB	ONE-SEAT, FRAME-TYPE, HEATED, VENTILATED, ILLUMINATED, FITTED WITH WINDOW WIPERS AND REAR VIEW MIRRORS



TIME FOR AGROMASH!

БРЕМЗА ГРОМАШ



AGROMASH 85 TK

VERSATILE TRACTOR

ALL WHEEL DRIVE VERSATILE TRACTOR, FEATURES A MODERN DESIGN AND ENHANCED VISIBILITY OF THE WORKING AREA. IN COMBINATION WITH IMPLEMENTS IT IS INTENDED FOR AGRICULTURAL, LOADING/UNLOADING AND TRANSPORT APPLICATIONS.



SPECIFICATIONS

SYNCHRONIZED TRANSMISSION, HYDRAULICALLY-OPERATED MONOBLOCK HITCH WITH DRAFT AND POSITION CONTROL, AUXILIARY THREE-SECTION CONTROL VALVE TO DELIVER POWER TO HYDRAULICALLY-OPERATED WORK TOOLS AND IMPLEMENTS COUPLED WITH THE TRACTOR.

MAXIMUM DRIVING SPEED 37.72 KM/H.

HEAVY-DUTY FRONT WHEELS (12.4 R24).

AUTOMATIC FRONT WHEEL DRIVE ENGAGEMENT/DISENGAGEMENT.

AGROMASH	85 TK
ENGINE	DIESEL D 145T/D 145TV/SISU 44
NORMAL RATED POWER [kW (HP)]	62.5 (85) / 73.5 (100) / 69.9 (95)
SPECIFIC FUEL CONSUMPTION [g/kWh (g/HPH)]	235 (173) / 235 (173) / 213 (156.8)
FRONT AXLE	DRIVE AXLE
HITCH LIFT CAPACITY AT HITCH LIFT POINT [KG]	3000
DIMENSIONS INCLUDING HITCH [MM]	3900x1800x2600
OPERATING WEIGHT [KG]	3800
COOLING SYSTEM	FORCED AIR (LIQUID) COOLING
ENGINE SPEED [RPM]	2100
SPEED RANGE [KM/H]	1.47 to 37.72
CAB	ONE-SEAT, FRAME-TYPE, HEATED, VENTILATED, ILLUMINATED, FITTED WITH WINDOW WIPERS AND REAR VIEW MIRRORS

AGRICULTURAL TRACK-TYPE TRACTOR

AGRICULTURAL TRACK-TYPE CATEGORY 3 TRACTOR IS DESIGNED FOR MAIN AGRICULTURAL APPLICATIONS IN COMBINATION WITH MOUNTED, SEMI-MOUNTED AND TRAILED IMPLEMENTS. OPTIONALLY, THE TRACTOR MAY FEATURE A CREEPER GEAR OR A REVERSING GEARBOX.



SPECIFICATIONS

AGROMASH	90 TG
ENGINE	DIESEL A-41 S1 / 44DTA SISU DIESEL
NORMAL RATED POWER [kW (HP)]	66.2 (90) / 69.9 (95)
PTO SPEED [RPM]	540 OR 1000
LIFTING CAPACITY, REAR HITCH [KG]	2500
DIMENSIONS INCLUDING HITCH IN TRANSPORT POSITION [MM]	4730x1850x3000
OPERATING WEIGHT [KG]	7100/6850
COOLING SYSTEM	LIQUID COOLING
ENGINE SPEED [RPM]	1750/1800
TRACK WIDTH [MM]	1330
WIDTH OF TRACK SHOE [MM]	390
AVERAGE GROUND PRESSURE [kPa]	MAX. 50
SPEED RANGE: MAIN / CREEPER GEAR / REVERSING GEARBOX [KM/H]	5.3 TO 11.2 / 0.33 TO 11.2 / 3.17 TO 11.2
CLEARANCE [MM]	380

AGRICULTURAL TRACK-TYPE TRACTOR

CATEGORY 4 TRACTOR IS DESIGNED FOR MAIN AGRICULTURAL APPLICATIONS IN COMBINATION WITH MOUNTED, SEMI-MOUNTED AND TRAILED IMPLEMENTS, AS WELL AS POWERED AND PASSIVE TOOLS. ENHANCED TRACTIVE POWER, WIDE RANGE OF TRACTIVE FORCES AND HIGH COMPATIBILITY WITH IMPLEMENTS ENSURE EFFICIENT PERFORMANCE OF THE TRACTOR COUPLED WITH PROGRESSIVE LARGE-SCALE IMPLEMENTS AND UNIVERSAL COMBINATIONS.



SPECIFICATIONS

MANUAL TRANSMISSION WITH PRESSURE LUBRICATION ENSURES MINIMAL POWER LOSS AND HIGH RELIABILITY. LOW GROUND PRESSURE. NO SLIPPAGE AND HIGH CROSS-COUNTRY ABILITY. COMFORTABLE CAB. LOW FUEL CONSUMPTION AND HIGHER OUTPUT PER HECTAR.

AGROMASH	150 TG
ENGINE	DIESEL D 442 VSI
NORMAL RATED POWER [kW (HP)]	116 (158)
TRACK WIDTH [MM]	1330
WIDTH OF TRACK SHOE [MM]	470
LIFTING CAPACITY, REAR HITCH [KG]	4000
DIMENSIONS INCLUDING HITCH IN TRANSPORT POSITION [MM]	5400x1860x3090
OPERATING WEIGHT [KG]	7820
COOLING SYSTEM	LIQUID COOLING
ENGINE SPEED [RPM]	1900
PTO SPEED [RPM]	540 OR 1000
SPEED RANGE [KM/H]	6.6 TO 15.5
CLEARANCE [MM]	380
AVERAGE GROUND PRESSURE [KPA]	MAX. 42

AGRICULTURAL ALL-ROUND TRACTOR

THE BASIC TRACTOR VERSION FEATURES A 6-CYLINDER IN-LINE 10.8 L CUMMINS OR SISU ENGINE WITH ELECTRONIC FUEL MANAGEMENT SYSTEM, TURBOCHARGER, AIR-TO-AIR AFTERCOOLING, SPECIFIC FUEL CONSUMPTION OF 167 G/HPH AT RATED POWER, AND OIL CONSUMPTION THROUGH BURNING NOT EXCEEDING 0.2% OF FUEL CONSUMPTION.



SPECIFICATIONS

AUTOMATIC HEATER ENABLES STARTING THE ENGINE AT TEMPERATURES BELOW ZERO. ENGINE MANAGEMENT SYSTEM INCLUDES FUEL INJECTION SYSTEM, DIAGNOSIS SYSTEM, ENGINE PROTECTION SYSTEM AND ENGINE CONTROL SYSTEM. THE ENGINE MEETS EU STAGE III, CARB TIER 3 EMISSION STANDARDS.

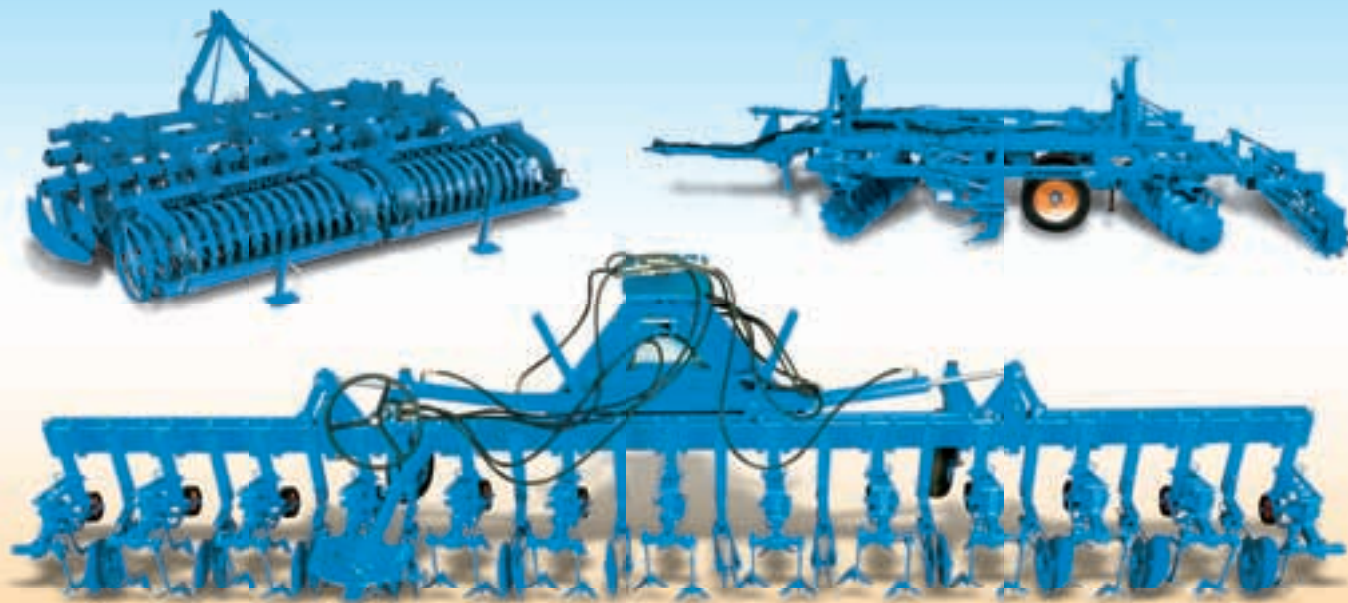
AGROMASH	315 TG
ENGINE	CUMMINS; SISU
NORMAL RATED POWER [kW (HP)]	232 (315)
PTO SPEED [RPM]	1000
LIFTING CAPACITY [KG]	7000 TO 8000
DIMENSIONS INCLUDING HITCH IN TRANSPORT POSITION [MM]	6500x2640x3300
OPERATING WEIGHT [KG]	13200
COOLING SYSTEM	LIQUID COOLING
ENGINE SPEED [RPM]	2100
TRACK WIDTH [MM]	1880-2000
WIDTH OF TRACK SHOE [MM]	600
AVERAGE GROUND PRESSURE [kPa]	45
SPEED RANGE	3.3 TO 32
CLEARANCE [MM]	390



FORCE OF HORSE POWERS!



SOIL CULTIVATION
SEEDING & PLANTING
FERTILIZING & PEST CONTROL
HAY MAKING AND HARVESTING



AGROMASH-HOLDING OFFERS INTEGRAL SOLUTIONS FOR SELECTING TRACTOR AND IMPLEMENT COMBINATIONS TO BUILD A HIGHLY EFFICIENT TRACTOR AND IMPLEMENT FLEET FOR SUCCESSFUL CROPPING.

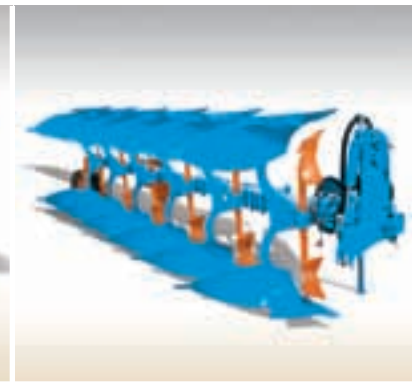
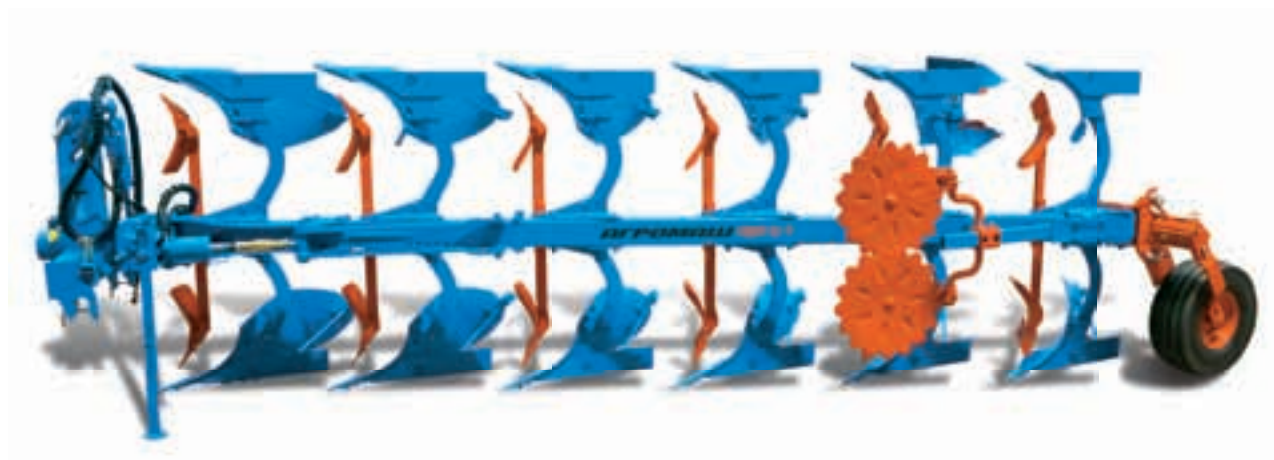
IMPLEMENTS:

- PLOWS, SUBSOILERS, DISC HARROWS, ROTARY HARROWS, CULTIVATORS AND COMBINATIONS
- SEED DRILLS
- FERTILIZER SPREADERS AND SPRAYERS
- MOWERS, BALERS, HAY RAKES AND BALE WRAPPERS
- TRAILED HARVESTERS, MOUNTED HARVESTERS AND ACCESSORIES

COMPETENT FARMING
GUARANTEES BIG CROP!



MOUNTED REVERSIBLE PLOWS



SPECIFICATIONS

- REVERSIBLE PLOW WITH MECHANICALLY ADJUSTABLE FURROW WIDTH IN FOUR STEPS, AVAILABLE AS A THREE-, FOUR-, FIVE-, OR SIX-FURROW VARIANT
- STONE PROTECTION SYSTEM: SHEAR BOLT
- HEADSTOCK WITH A DOUBLE ACTING HYDRAULIC RAM AS STANDARD
- PLATE/SLATTED MOLDBOARD
- CHISEL PLOWSHARE
- KNIFE COULTER
- DEPTH WHEEL

AGROMASH	PNO 3	PNO 4	PNO 3+1	PNO 4+1	PNO 5+1
NUMBER OF FURROWS	3	4	4	5	6
BEAM-TO-GROUND CLEARANCE	78	78	82	82	82
FURROW WIDTH [CM]	32,36,40, 44	32,36,40, 44	36,40,44, 48	36,40,44, 48	36,40,44, 48
COVERAGE, MAX. [HA/H]	1.1	1.4	1.4	1.9	2.3
RECOMMENDED LAND PLOT SIZE [HA]	30	40	50	60	60
TRACTOR POWER CLASS [HP]	85-120	120-150	120-150	150-180	180-210



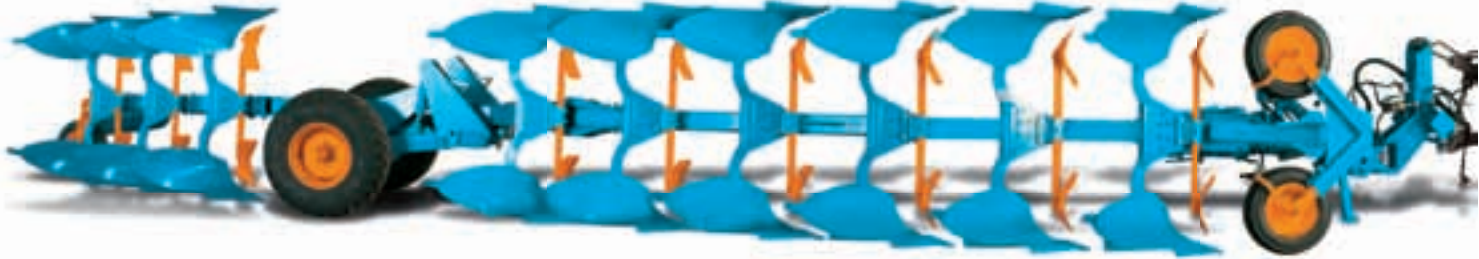


SPECIFICATIONS

- SEMI-MOUNTED REVERSIBLE PLOW WITH MECHANICALLY ADJUSTABLE FURROW WIDTH IN FOUR STEPS, AVAILABLE AS A SEVEN-, EIGHT- OR NINE-FURROW VARIANT
- LARGE DEPTH WHEEL (945 MM DIAMETER, 500 MM WIDTH) MOUNTED ON THE SIDE NEXT TO THE LAST-BUT-ONE PLOW BODY
- STONE PROTECTION SYSTEM: SHEAR BOLT
- HEADSTOCK WITH A DOUBLE ACTING HYDRAULIC RAM AS STANDARD)
- HYDRAULIC FRONT FURROW WIDTH ADJUSTMENT (ON THE FIRST BODY)

AGROMASH	PPO 6+1	PPO 7+1	PPO 8+1
NUMBER OF FURROWS	7	8	9
BEAM-TO-GROUND CLEARANCE	78	78	78
FURROW WIDTH [CM]	36, 40, 44, 48	36, 40, 44, 48	36, 40, 44, 48
COVERAGE, MAX. [HA/H]	2.6	3.0	3.4
RECOMMENDED LAND PLOT SIZE [HA]	50-70	60-80	70-90
TRACTOR POWER CLASS [HP]	210-240	240-270	270-300

SEMI-MOUNTED REVERSIBLE PLOWS (ON LAND)

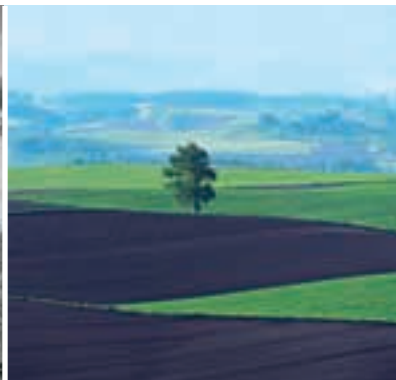


SPECIFICATIONS

- SEMI-MOUNTED REVERSIBLE PLOW WITH MECHANICALLY ADJUSTABLE FURROW WIDTH IN FOUR STEPS, AVAILABLE AS A NINE-FURROW VARIANT
- AXLE WITH TWO LARGE WHEELS (1050 MM DIAMETER, 400 MM WIDTH), A REVERSIBLE DEPTH WHEEL MOUNTED NEXT TO THE LAST BODY
- HYDRAULIC FRAME JOINT WITH A STANDARD AUTO-FLOAT CONTROL ENSURING THE OPTIMAL SOIL ADAPTATION
- STONE PROTECTION SYSTEM: SHEAR BOLT
- HYDRAULIC REVERSING MECHANISM WITH TWO REVERSING CYLINDERS AND TRANSPORT INTERLOCK
- HYDRAULIC FRONT FURROW WIDTH ADJUSTMENT (ON THE FIRST BODY)

AGROMASH	PPO (6+3)
NUMBER OF FURROWS	3
BEAM-TO-GROUND CLEARANCE	82
FURROW WIDTH [CM]	36, 40, 44, 48
COVERAGE, MAX. [HA/H]	4.3
RECOMMENDED LAND PLOT SIZE [HA]	60-90
TRACTOR POWER CLASS [HP]	300-330

HEAVY-DUTY SEMI-MOUNTED PLOWS (ON LAND)



SPECIFICATIONS

- HEAVY-DUTY SEMI-MOUNTED REVERSIBLE PLOW WITH MECHANICALLY ADJUSTABLE FURROW WIDTH IN FOUR STEPS, AVAILABLE IN 10 TO 12 FURROW VARIANTS. NARROW CROSS-SHAFT WITH TWO LARGE WHEELS (945 MM DIAMETER, 500 MM WIDTH)
- HYDRAULIC FRAME JOINT WITH A STANDARD AUTO-FLOAT CONTROL ENSURING THE OPTIMAL SOIL ADAPTATION
- DEPTH WHEEL MOUNTED TO THE LAST BODY
- STONE PROTECTION SYSTEM: SHEAR BOLT
- HYDRAULIC REVERSING MECHANISM WITH TWO REVERSING CYLINDERS AND TRANSPORT INTERLOCK
- HYDRAULIC FRONT FURROW WIDTH ADJUSTMENT (ON THE FIRST BODY)
- CROSS-SHAFT WITH TWO INTEGRATED BALLS

AGROMASH	PPU 6+3+1	PPU 7+3+1	PPU 8+3+1
NUMBER OF FURROWS	10	11	12
BEAM-TO-GROUND CLEARANCE	78	78	78
FURROW WIDTH [CM]	36, 40, 44, 48	36, 40, 44, 48	36, 40, 44, 48
COVERAGE, MAX. [HA/H]	3.8	4.2	4.6
RECOMMENDED LAND PLOT SIZE [HA]	100-110	110-120	120-130
TRACTOR POWER CLASS [HP]	300-330	330-360	360-390

MOUNTED STUBBLE CULTIVATORS



SPECIFICATIONS

- DISCS ARE ADJUSTED SIMULTANEOUSLY WITH THE ROLLER DEPTH ADJUSTMENT
- CENTRALLY ADJUSTABLE DISCS
- INCREASED RELEASE FORCE ON THE SHEAR BOLT STONE PROTECTION SYSTEM
- SELF-CLEANING ROLLER, OR TAPERED RING ROLLER ENSURES OPTIMAL SOIL LOOSENING AND CONSOLIDATION
- ADJUSTABLE SPRUNG EDGE PLATES

AGROMASH	KSN 300	KSN 400	KSN 500	KSN 600	ROLLER	ROLLER	ROLLER	ROLLER
NUMBER OF TINES	7	9	11	13	-	-	-	-
WORKING WIDTH [M]	3.00	4.00	5.00	6.00	3.00	4.00	5.00	6.00
WORKING DEPTH [CM]	8-25	8-25	8-25	8-25	-	-	-	-
WEIGHT [KG]	970	1380	1540	1730	710	830	950	1200
COVERAGE, [HA/H]	2.8	3.8	4.8	5.8	-	-	-	-
RECOMMENDED LAND PLOT SIZE [HA]	UP TO 40	40 AND MORE	50 AND MORE	60 AND MORE	-	-	-	-
TRACTOR POWER CLASS [HP]	120-150	150-180	180-210	210-240	-	-	-	-

MOUNTED STUBBLE CULTIVATORS

- RELEASE FORCE ON THE SHEAR BOLT STONE PROTECTION SYSTEM AND NON-STOP SYSTEM CAN BE INCREASED BY 35% TO LEAVE STONES IN THE GROUND
- STONE PROTECTION AS AN ACCESSORY (SHEAR BOLT PROTECTION AS AN OPTION)
- SELF-CLEANING FOLLOWER ROLLER OR TAPERED RING ROLLER ENSURES OPTIMAL SOIL LOOSENING AND CONSOLIDATION



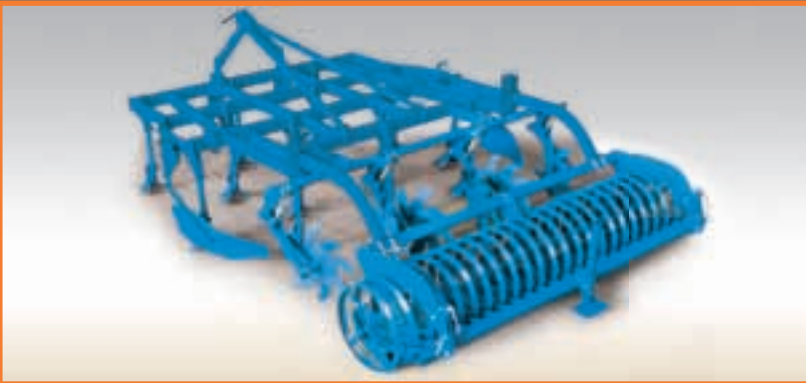
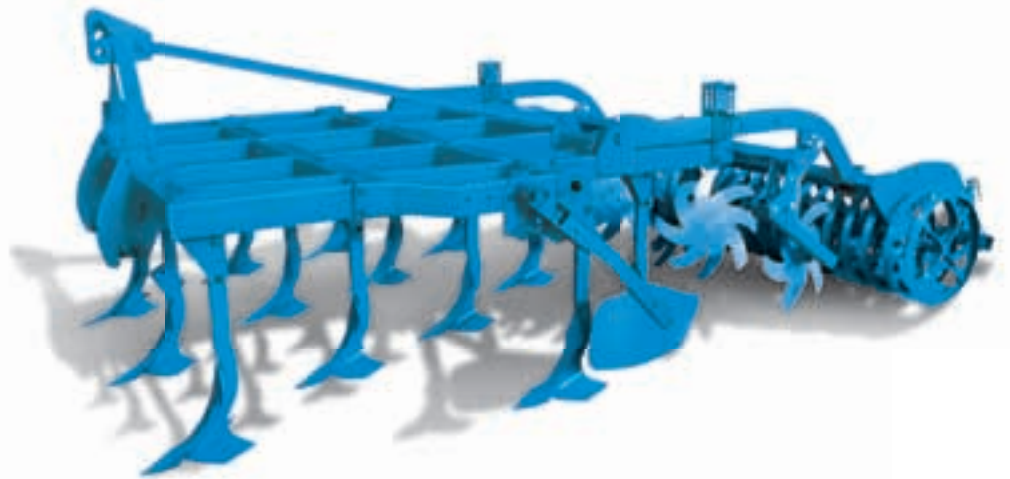
SPECIFICATIONS

- THE SPRING-MOUNTED SERRATED DISCS AS A STANDARD FEATURE FOR PERFECT INCORPORATION OF CROP RESIDUE
- AUTOMATIC AND FULL FITTING OF DISCS
- CENTRALLY ADJUSTABLE DISCS
- ADJUSTABLE SPRUNG EDGE PLATES

AGROMASH	KSU 300	KSU 400	KSU 500	ROLLER	ROLLER	ROLLER
NUMBER OF TINES	10	10	16	-	-	-
WORKING WIDTH [M]	3.00	4.00	5.00	3.00	4.00	5.00
WORKING DEPTH [CM]	8-25	8-25	8-25	-	-	-
WEIGHT [KG]	1095	1540	1860	710	830	950
COVERAGE, MAX. [HA/H]	2.8	3.8	4.8	-	-	-
RECOMMENDED LAND PLOT SIZE [HA]	10 AND MORE	OVER 40	OVER 50	-	-	-
TRACTOR POWER CLASS [HP]	140-160	150-210	180-240	-	-	-

- ROBUST FRAME, 100 x 100 MM CROSS-SECTION, 3 BEAMS, WING SHARES
- DIAMOND-CROSSING SHARE (BROAD DUCKFOOT SHARE AVAILABLE ON DEMAND), 10 MM THICK; LINE SPACING 33 CM
- SHEAR BOLT STONE PROTECTION WITH 35% INCREASED RELEASE FORCE
- FRAME HEIGHT 80 CM
- SERRATED DISCS, 600 MM DIAMETER (HELICAL SPRING STONE PROTECTION)
- FINE ROLLER AND/OR SERRATED DISC DEPTH ADJUSTMENT WITH PINS
- REMOVABLE CAT. II OR III LINK BAR
- A PAIR OF ADJUSTABLE SPRUNG EDGE PLATES

MULTIFUNCTIONAL CULTIVATORS



SPECIFICATIONS

- WORKING DEPTH 3 TO 25 CM
- 4-BEAM CONSTRUCTION ENSURES BETTER SOIL TILLAGE AND INCORPORATION
- HELICAL-SPRUNG C-SHAPED TINES WITH A SELF-CLEANING EFFECT AND STUMP-JUMP FUNCTION
- OPTION OF STRAIGHT OR SPRING-LOADED SHANKS
- THE TOOL ENSURES CONSISTENT WORKING DEPTH EVEN ON IRREGULAR TERRAIN
- SERRATED DISCS ENSURE INCORPORATION AND PERFECT LEVELING
- A PAIR OF ADJUSTABLE SPRUNG EDGE PLATES
- TRANSPORT WIDTH WHEN FOLDED IS LESS THAN 3 M

AGROMASH	OPO 300	OPO 400	OPO 500	OPO 600
NUMBER OF TINES	13	17	21	25
WORKING WIDTH [M]	3.00	4.00	5.00	6.00
WORKING DEPTH [CM]	3-25	3-25	3-25	3-25
WEIGHT WITHOUT ROLLER [KG]	1250	2390	2820	3150
ROLLER WEIGHT [KG]	530	830	950	1120
COVERAGE, MAX. [HA/H]	2.8	3.8	4.8	5.8
RECOMMENDED LAND PLOT SIZE [HA]	UP TO 40	40 AND MORE	50 AND MORE	60 AND MORE
TRACTOR POWER CLASS [HP]	140-180	150-230	180-260	250-300

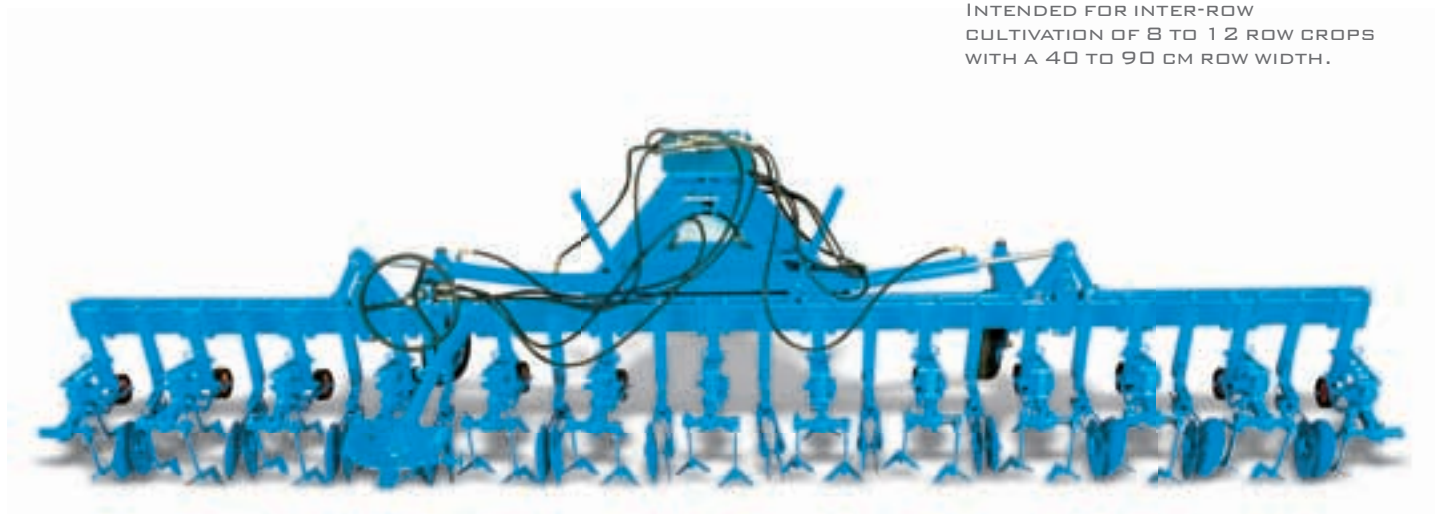


**TESTED BY TIME,
TESTED BY RUSSIA!**



INTER-ROW CULTIVATOR

INTENDED FOR INTER-ROW CULTIVATION OF 8 TO 12 ROW CROPS WITH A 40 TO 90 CM ROW WIDTH.



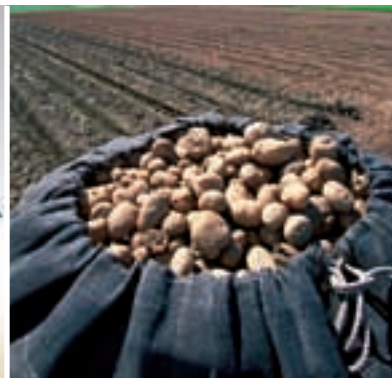
SPECIFICATIONS

AGROMASH	KMO 12/8
TYPE	MOUNTED
COVERAGE [HA/H]	3.4-5.6
FIELD SPEED [KM/H]	5-10
WORKING WIDTH [M]	5.6

- IN COMBINATION WITH TOOLS, THE CULTIVATOR PERFORMS THE FOLLOWING OPERATIONS:
 - INTER-ROW WEEDING AND HOEING (FLAT L-SHARES OR A-SHARES)
 - INTER-ROW HOEING (CHISEL TINES)
 - FERTILIZING (VARIANT WITH FERTILIZER DISTRIBUTORS)
- FERTILIZER DISTRIBUTOR IS MADE OF CORROSION RESISTANT MATERIAL
- COMPATIBLE WITH CATEGORY 1.4 TRACTORS



MOUNTED CHISEL PLOWS



SPECIFICATIONS

AGROMASH	PCHN 6	PCHN 8
NUMBER OF TINES	6	8
WORKING WIDTH [M]	3.00	3.00+2x0.5
WORKING DEPTH [CM]	70	70
WEIGHT WITHOUT ROLLER [KG]	965	1160
ROLLER WEIGHT [KG]	530	830
COVERAGE, MAX. [HA/H]	1.9	2.6
RECOMMENDED LAND PLOT SIZE [HA]	OVER 50	OVER 60
TRACTOR POWER CLASS [HP]	150-180	180-210

- FRAME 200 X 100 X 10 MM
- STANDARD WIDTH 3 M
- FRAME HEIGHT 900 MM
- TWISTED TINES MADE OF SPECIAL STEEL
- SHEAR BOLT STONE PROTECTION
- CATEGORY II OR III LOWER LINK BAR
- TWO PNEUMATIC DEPTH WHEELS 235 X 15
- REAR ROLLER (450 MM)
- HYDRAULIC STONE PROTECTION

MOUNTED SUBSOILERS



SPECIFICATIONS

AGROMASH	GRN 6	GRN 7
NUMBER OF TINES	6	7
FRAME WORKING WIDTH [M]	2.60+ (2x0.50)	2.60+ (2x0.50)
WORKING DEPTH [CM]	70	70
WEIGHT [KG]	1038	1071
COVERAGE, MAX. [HA/H]	2.3	2.6
RECOMMENDED LAND PLOT SIZE [HA]	50-60	60-80
TRACTOR POWER CLASS [HP]	150-180	180-210

- FRAME 200 X 100 X 10 MM
- WIDTH 2.6 M, EXPANDABLE TO 5 M
- FRAME HEIGHT 750 MM
- KNIFE TINES 30 MM THICK
- SHEAR BOLT OVERLOAD PROTECTION
- CAT. II OR III LOWER LINK BAR
- TWO PNEUMATIC WHEELS 235 X 15 FOR DEPTH ADJUSTMENT



SPECIFICATIONS

INTENDED FOR PRIMARY AND SECONDARY TILLAGE OF SOIL TO BE USED FOR CEREAL, INDUSTRIAL AND FODDER CROPS.

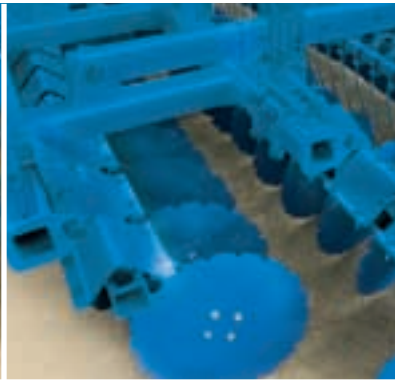
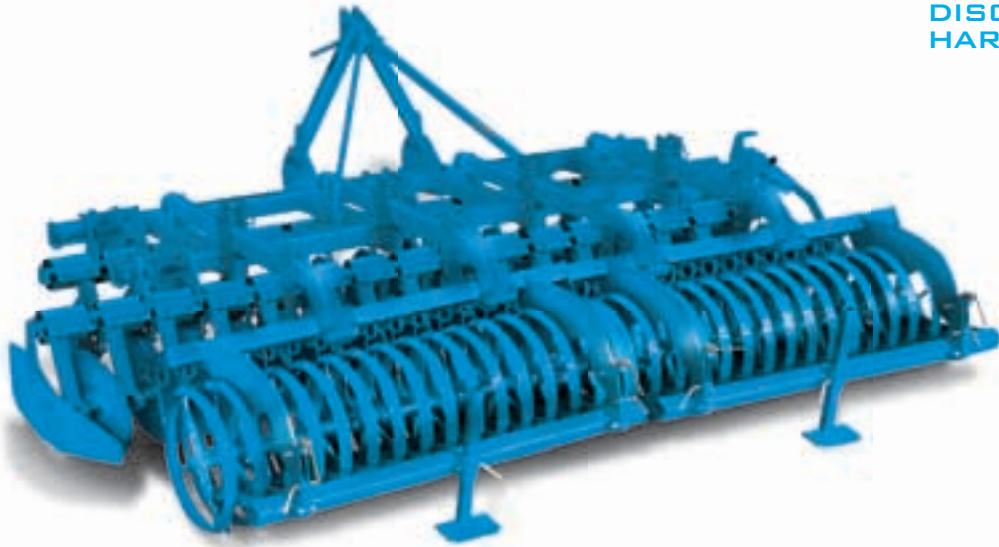
AGROMASH	BDK 360/3	BDK 400/5	BDK 440/7	BDK 480/7	BDK 560/7	BDK 640/9
WORKING WIDTH [M]	3.60	4.00	4.40	4.80	5.60	6.40
FIELD SPEED [KM/H]	12-15	12-15	12-15	12-15	12-15	12-15
COVERAGE, [HA/H]	UP TO 4.3	UP TO 4.8	UP TO 5.2	UP TO 5.7	UP TO 6.7	UP TO 7.6
TRACTOR POWER CLASS [HP]	150-180	210-270	250-300	300-320	320-360	360-450
NUMBER OF TINES	3	5	7	7	7	9
NUMBER OF DISCS	32	36	40	44	48	56
NUMBER OF BEARINGS	8	10	10	12	12	16
WEIGHT [KG]	5855	6630	6800	7065	8300	8965
CAGE ROLLER (450 MM)						
WEIGHT [KG]	580	640	700	760	820	940
RECOMMENDED LAND PLOT SIZE [HA]	UP TO 50	UP TO 50-70	70-90	90-110	110-130	OVER 130

ONE-PASS OPERATIONS ARE AS FOLLOWS:

- THE FRONT LINE OF DISCS CUTS THE SOIL AND INCORPORATES STUBBLE RESIDUE.
- TINES WITH NON STOP PROTECTION PENETRATE THE SOIL TO ENSURE ITS AERATION, MOISTURIZING AND FERTILIZING AND SECURE NEXT YEAR'S YIELD.
- THE REAR LINE OF DISCS CRUMBLES, INCORPORATES AND LEVELS THE SOIL.



MOUNTED DISC HARROWS



SPECIFICATIONS

HIGH OUTPUT COMPACT DISC HARROW IS USED FOR INTENSIVE MIXING AND INCORPORATION OF STUBBLE RESIDUE. DESIGNED FOR SHALLOW CULTIVATION BETWEEN 2 AND 10 CM, IT MIXES THE CROP REMAINS WITH THE SOIL. FINE DEPTH ADJUSTMENT BY MEANS OF ADJUSTMENT PLATES WITH THREE ROWS OF CLOSELY STEPPED HOLES. THE TOOL FEATURES TWO LINES OF DISCS, A SPRUNG HARROW AND AN ADJUSTABLE FOLLOWER TAPERED RING ROLLER WHICH CONSOLIDATES THE SOIL TO SUIT CUSTOMIZED NEEDS.

AGROMASH	BDN 400	BDN 600
WORKING WIDTH [M]	400	600
TRANSPORT WIDTH [CM]	398	290
NUMBER OF DISCS	32	48
DISC DIAMETER [MM]	460	460
ROLLER	FOLLOWER TAPERED RING ROLLER, Ø 600 MM	
WEIGHT [KG]	2200	3530

LIGHT-DUTY ROTARY HARROWS



SPECIFICATIONS

- SOLID CONSTRUCTION WITH CENTRALLY-MOUNTED GEARBOX FOR A SPEED OF 540 RPM
- SIDE IMPACT PLATES AND FRONT LEVELING BAR
- HORIZONTAL COMPENSATION BETWEEN TRACTOR AND ROTARY HARROW DUE TO PIVOTING TRACTOR ATTACHMENT
- PTO SHAFT DRIVE, ADJUSTABLE REAR LEVELING BAR, SHAFT BAR WITH SLIP CLUTCH, CAGE ROLLER 400 MM
- OPTIONALLY, CHANGE-SPEED GEARBOX AND DRIVE SHAFT WITH PIN SAFETY CLUTCH

AGROMASH	BRL 250	BRL 300	BRL 350	BRL 400
NUMBER OF ROTORS/KNIVES	11/22	13/26	16/32	18/36
WORKING WIDTH [M]	2.50	3.00	3.50	4.00
WORKING DEPTH [CM]	10-18	10-18	10-18	10-18
WEIGHT [KG]	720	900	1120	1250
COVERAGE, MAX. [HA/H]	2.4	2.8	3.2	3.6
RECOMMENDED LAND PLOT SIZE [HA]	ANY			
TRACTOR POWER CLASS [HP]	85-100	90-120	120-140	130-150



MEDIUM-DUTY ROTARY HARROW

- ROBUST CONSTRUCTION
- CHANGE-SPEED GEARBOX
- PTO-DRIVEN ROTOR (STANDARD)
- CENTRALLY-MOUNTED PTO SHAFT DRIVE
- TAPERED ROLLER BEARING



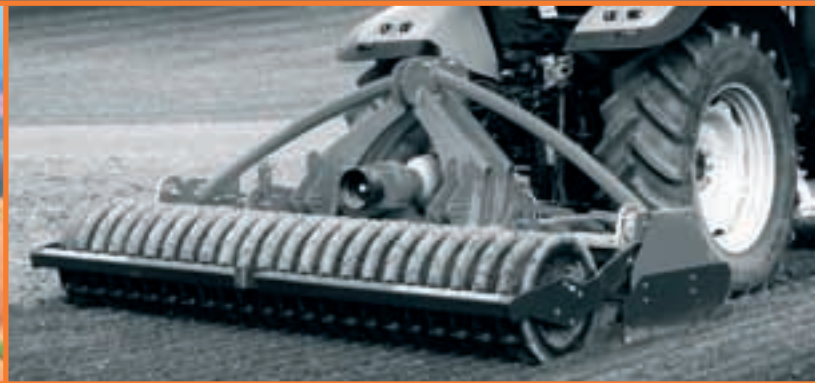
SPECIFICATIONS

- REAR LEVELING BAR (STANDARD)
- STANDARD STONE GUARD
- FORGED KNIFE TINES 34 CM
- DRIVE SHAFT WITH PIN SAFETY CLUTCH
- TOUGH IN STONY CONDITIONS
- SPRING-LOADED SIDE IMPACT PLATES (TWO-COMPONENT, CENTRALLY-LOCATED THREE-POINT LINKAGE)
- ROBUST “DOUBLE-FLOOR” PAN OF THE ROTOR SHAFT
- PACKER ROLLER WITH WELDED-ON TINES FOR BETTER RESULTS
- CONTINUOUS, QUICK AND ACCURATE ROLLER HEIGHT ADJUSTMENT

AGROMASH	BRS 300	BRS 400
NUMBER OF ROTORS/KNIVES	24	32
WORKING WIDTH [M]	3.00	4.00
WORKING DEPTH [CM]	20-25	20-25
WEIGHT [KG]	1045	1295
COVERAGE, MAX. [HA/H]	2.8	3.6
RECOMMENDED LAND PLOT SIZE [HA]	ANY	
TRACTOR POWER CLASS [HP]	150-180	180-210

	PACKER ROLLER Ø 500 MM
WORKING WIDTH [M]	3.00/4.00
WEIGHT [KG]	380/541

HEAVY-DUTY ROTARY HARROWS



SPECIFICATIONS

- CHANGE-SPEED GEARBOX
- PTO-DRIVEN ROTOR (STANDARD)
- ROBUST "DOUBLE-FLOOR" PAN OF THE ROTOR SHAFT, TAPERED ROLLER BEARING
- REAR LEVELING BAR (STANDARD)
- SPRING-LOADED TWO-COMPONENT SIDE IMPACT PLATES, CENTRALLY-LOCATED THREE-POINT LINKAGE
- STANDARD STONE GUARD
- FORGED KNIFE TINES 34 CM
- CONTINUOUS, QUICK AND ACCURATE ROLLER HEIGHT ADJUSTMENT
- PACKER ROLLER WITH WELDED-ON TINES FOR BETTER RESULTS
- DRIVE SHAFT WITH PIN SAFETY CLUTCH

AGROMASH	BRT 300	BRT 400
NUMBER OF ROTORS/KNIVES	24	32
WORKING WIDTH [M]	3.00	4.00
WORKING DEPTH [CM]	25-30	25-30
WEIGHT [KG]	1105	1379
COVERAGE, MAX. [HA/H]	2.8	3.6
RECOMMENDED LAND PLOT SIZE [HA]	ANY	
TRACTOR POWER CLASS [HP]	180-210	210-240

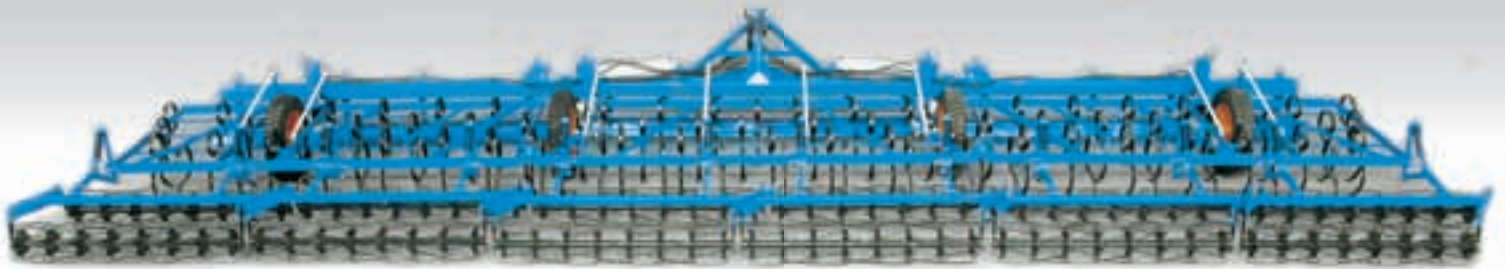
TRANSPORT CHASSIS



SPECIFICATIONS

- THREE-POINT MOUNTING
- COST EFFECTIVE – CAN BE COMBINED WITH SEVERAL IMPLEMENTS
- REDUCED LOAD ON TRACTOR HYDRAULIC SYSTEM
- HIGH SAFETY DURING ROAD TRANSPORTATION
- STABLE CARRIER FRAME
- SECTION 100 x 100 MM
- TIRES 400/60 x 15.5 (875 MM DIAMETER, WIDTH 400 MM)
- IMPLEMENT WEIGHT 850 KG
- TOW DRAWBAR WITH HEIGHT ADJUSTMENT AND CAT. III OR IV LOWER LINK BAR. OPTIONAL DRAWBAR (REQUIRED FOR TRACK-TYPE TRACTORS OR KIROVETS TRACTORS)
- COMPATIBLE WITH FOLDABLE IMPLEMENTS AGROMASH KSN, AGROMASH KSU, AGROMASH OPD, AGROMASH BDN

SEEDBED PREPARATION COMBINATION



SPECIFICATIONS

THE IMPLEMENT IS DESIGNED TO GET THE SEEDBED PREPARED FOR SOWING SUGAR BEET, SPIKED CEREALS, MAIZE, SUNFLOWER, ETC. IT INCORPORATES A PLANING BOARD, SPRING-LOADED S-SHANKS AND TWO ROLLERS. THE SHANKS CAN BE FITTED WITH TINES OF DIFFERENT TYPES TO SUIT DIFFERENT CROPS. THE GROUND PRESSURE OF THE PLANING BOARD AND ROLLERS IS ADJUSTED BY SPRINGS.

AGROMASH	OKPO 500	OKPO 600	OKPO 960
WORKING WIDTH [M]	5.00	6.00	9.60
WORKING DEPTH [CM]	3-12	3-12	до 15
COVERAGE, MAX. [HA/H]	4.8	5.7	10
RECOMMENDED LAND PLOT SIZE [HA]	ANY		60 AND MORE
WEIGHT [KG]	4100	4870	2580
TRACTOR POWER CLASS [HP]	180-210	210-240	130-150

PNEUMATIC SEED DRILLS



SPECIFICATIONS

PNEUMATIC SEED DRILL FOR SOWING IN THE PLOWED OR SUPERFICIALLY LOOSENESED GROUND.

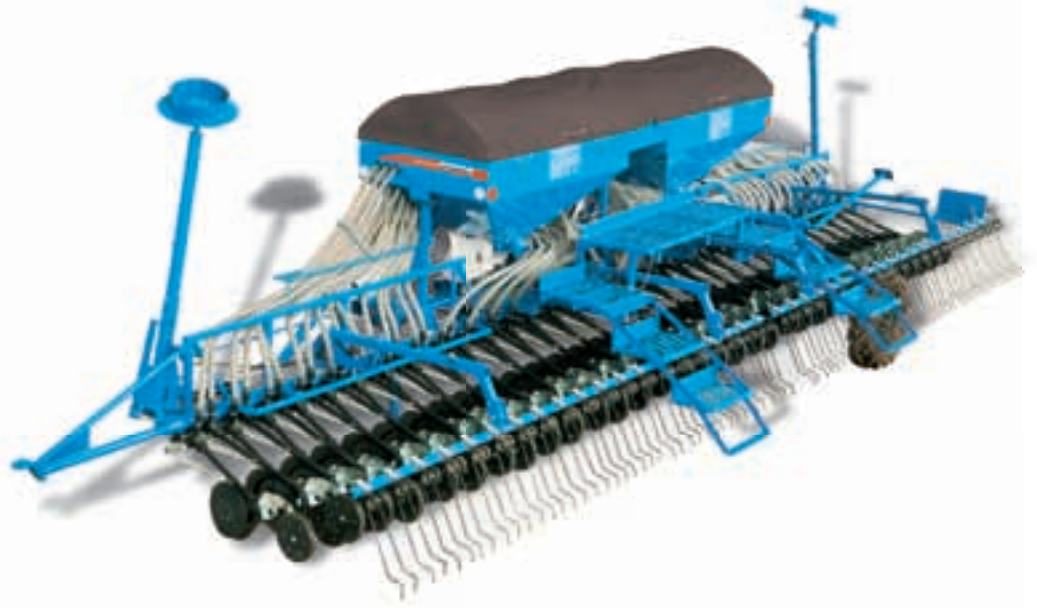
PNEUMATIC SEED DRILLS ARE FITTED WITH:

- LARGE SEED HOPPER FOR CEREALS WITH TWO OR FOUR METERING UNITS;
- SMALL HOPPER (OPTIONALLY) FOR SMALL SEEDS OR GRANULATED FERTILIZERS;
- GEARBOX OR INFINITELY VARIABLE GEARBOX (OPTIONALLY).

HYDRAULICALLY FOLDABLE FRAME. TRANSPORT WIDTH 2.54 M. TWO AGROMASH 600 BS SEED DRILLS CAN BE COMBINED BY MEANS OF UST TRANSPORT HITCH TO ACHIEVE A WORKING WIDTH OF 12 M.

AGROMASH	SZP 450	SZP 600 BS
COULTER	SINGLE DISC OR DOUBLE DISC	
WORKING WIDTH [M]	4.5	6
NUMBER OF ROWS	36	48
ROW SPACING [CM]	12.5	12.5
SEED HOPPER VOLUME [L]	1000	1000
FERTILIZER HOPPER VOLUME [L]	130	130
WEIGHT [KG]	1060	1430
COVERAGE, MAX. [HA/H]	3.8	5.0
RECOMMENDED LAND PLOT SIZE [HA]	UP TO 50	50 AND MORE
TRACTOR POWER CLASS [HP]	90-120	130-150

PNEUMATIC SEED DRILLS



SPECIFICATIONS

- SEED HOPPER VOLUME: 2 x 750 L
- TRAVEL SYSTEM FOR ROAD TRANSPORT
- TWO AGROMASH 600 BS SEED DRILLS CAN BE COMBINED BY MEANS OF UST TRANSPORT HITCH TO ACHIEVE A WORKING WIDTH OF 12 M
- TWO METERING UNITS FOR CEREALS AND SMALL SEEDS: 2 TO 400 KG/HA
- FREEWHEEL CLUTCH OF THE METERING UNIT DRIVE
- FAN DRIVE WITHOUT A CENTRIFUGAL CLUTCH FOR PTO SHAFT SPEED 1 000 RPM
- HYDRAULIC FOLDING OF TRACK INDICATOR
- CENTRAL AND INDIVIDUAL COULTER PRESSURE ADJUSTMENT

AGROMASH	SZP 600	SZP 800
COULTER	SINGLE DISC OR DOUBLE DISC	
WORKING WIDTH [M]	6	8
NUMBER OF ROWS	48	64
ROW SPACING [CM]	12.5	12.5
SEED HOPPER VOLUME [L]	2x750	2x750
COVERAGE, MAX. [HA/H]	5	6.7
RECOMMENDED LAND PLOT SIZE [HA]	50 AND MORE	80 AND MORE
TRACTOR POWER CLASS [HP]	130-150	150-180

MECHANICAL SEED DRILLS



SPECIFICATIONS

- THREE-POINT MOUNTING, CATEGORY II
- WHEELS 200x 14.5"
- MEASURING UNIT DRIVE.
- REVERSIBLE SELF-CLEANING COULTERS
- NORTON GEAR MECHANISM
- CAM SPEED METERING WHEEL SYSTEM
- BUCKET WHEEL FOR EVEN DISCHARGE OF THE HOPPER
- TRACK INDICATOR, HYDRAULICALLY OPERATED, VERTICAL FOLDING
- CENTRAL AND INDIVIDUAL COULTER PRESSURE ADJUSTMENT
- DUST-TIGHT SEED HOPPER COVER
- SACK CARRIERS
- CAM SEED METERING WHEEL SYSTEM
- SHUTTER FLAP FOR A SHOE COULTER
- PARKING LEG
- BRACKETS FOR LIGHTING EQUIPMENT

AGROMASH	SZM 300	SZM 400
COULTER	SINGLE DISC OR DOUBLE DISC	
WORKING WIDTH [M]	3.0	4.0
NUMBER OF ROWS	24	32
ROW SPACING [CM]	12.5	12.5
SEED HOPPER VOLUME [L]	645	870
COVERAGE, MAX. [HA/H]	2.5	3.3
RECOMMENDED LAND PLOT SIZE [HA]	UP TO 50	UP TO 50
TRACTOR POWER CLASS [HP]	80-90	80-90

TRANSPORT HITCH



SPECIFICATIONS

AGROMASH	UST 12	UST 8
APPLICATION	COUPLING OF TWO AGROMASH SZP 600 SEED DRILLS	COUPLING OF TWO AGROMASH SZM 400 SEED DRILLS
DESCRIPTION	TRANSPORT HITCH FOR COUPLING AGROMASH SZP 600 PNEUMATIC SEED DRILLS INTO A LARGE-SCALE SOWING COMBINATION. WORKING WIDTH 12 M (2 SEED DRILLS)	TRANSPORT HITCH FOR COUPLING AGROMASH SZM 400 MECHANICAL SEED DRILLS INTO A LARGE-SCALE SOWING COMBINATION. WORKING WIDTH 8 M (2 SEED DRILLS)
WORKING WIDTH [M]	12	8

PRECISION SEED DRILLS



SPECIFICATIONS

- CARDAN SHAFT
- GEARBOX, 21 RATIOS
- HYDRAULIC MARKER
- SET OF SEED DISCS
- VACUUM METER
- SEED EMPTYING COLLECTOR
- PARTITION FOR SMALL SEEDS
- PTO 1 000 RPM
- SPRING ATTACHMENT TO LIGHTEN THE PLANTING UNITS
- V-SHAPED PRESS WHEELS, 1 INCH
- PLANTING UNIT SHIFTING LEVER

AGROMASH	STVP 4/4	STVP 6/4	STVP 6/6	STVP 12/8
WORKING WIDTH [M]	2.98	2.98	4.40	6.00
NUMBER OF ROWS (SUGAR BEET/MAIZE)	4	6/4	6/6	12/8
ROW SPACING [M]	0.25-0.75	0.25-0.75	0.25-0.75	0.25-0.75
SEED HOPPER VOLUME [L]	25	25	25	25
FERTILIZER HOPPER VOLUME [L]	60	60	60	60
WEIGHT [KG]	620	780	840	1 500
COVERAGE, MAX. [HA/H]	2	2	3.1	4.2
RECOMMENDED LAND PLOT SIZE [HA]	UP TO 40	UP TO 40	UP TO 50	UP TO 50
TRACTOR POWER CLASS [HP]	45-50	45-50	45-50	45-50

PRECISION ROW CROP PLANTERS



SPECIFICATIONS

- ROBUST DOUBLE FRAME
- LARGE-SIZE AND /OR DOUBLE WHEELS
- CARDAN SHAFT
- HYDRAULIC MARKER WITH A DISC
- REAR PTO
- CENTRAL GEARBOX
- INTERDEPENDENT WHEELS FOR SOWING DEPTH ADJUSTMENT
- DOUBLE-DISC COULTER
- ADJUSTABLE WHEEL CLEANING DEVICE
- ADJUSTABLE V-PRESS WHEELS, 1 INCH
- FULL SET OF SEED DISCS
- SEED EMPTYING COLLECTOR AND PLANTING UNIT SHIFTING LEVER
- TRAVEL SYSTEM

AGROMASH	STVP 12/10	STVP 18/12
WORKING WIDTH [M]	5.90	9.00
NUMBER OF ROWS, MAX.	12/10/8	18/12
ROW SPACING [CM]	45-70	45-70
SEED HOPPER VOLUME [L]	420	630
FERTILIZER HOPPER VOLUME [L]	860	1290
WEIGHT [KG]	1630	2770
COVERAGE, MAX. [HA/H]	5.6	6.1
RECOMMENDED LAND PLOT SIZE [HA]	UP TO 50	50 AND MORE
TRACTOR POWER CLASS [HP]	85-120	150-180

PRECISION VEGETABLE PLANTER



SPECIFICATIONS

THE SWIVELING EQUALIZER WITH A VERY SHORT ARM ENSURES AN EXCELLENT DEPTH ADJUSTMENT. WIDE-RANGE OF BALLASTED COVERERS AND PRESS WHEELS (WHEELS WITH RUBBER TIRES, STAINLESS OR CAGE WHEELS) ENSURE THE OPTIMAL SEEDBED ON ANY SOIL. THE MINIMAL ROW SPACING FOR MULTIPLE ROW UNITS IS 30 MM, FOR SINGLE ROW UNITS – 225 MM.

THIS PLANTER FEATURES A PATENTED DISTRIBUTION SYSTEM WHICH IS SPECIALLY ADOPTED FOR SMALL SEEDS. THE SEED DISC (DIAMETER 24 CM) ENSURES ACCURATE SEED SINGULATION. EACH METERING UNIT CAN BE USED FOR PLANTING TWO OR THREE LINES AS THE CROP MAY REQUIRE.

AGROMASH	STVO 15/2	STVO 18/2
WORKING WIDTH [M]	5.60	5.60
NUMBER OF ROWS	15	18
ROW SPACING, MIN. [CM]	12	12
SEED HOPPER VOLUME [L]	150	180
FERTILIZER HOPPER VOLUME [L]	96	108
WEIGHT [KG]	1250	1390
COVERAGE, MAX. [HA/H]	3.5	3.5
RECOMMENDED LAND PLOT SIZE [HA]	UP TO 50	50 AND MORE
TRACTOR POWER CLASS [HP]	85-120	120-150



THE EFFICIENT PROTECTION OF CROPS AGAINST WEEDS, PESTS AND DISEASES ALWAYS INVOLVES BOTH PREVENTIVE MEASURES AND DIRECT ACTIONS. THE LATTER ARE USED IF THE CROPS HAVE BEEN AFFECTED BY PESTS DESPITE PREVENTIVE MEASURES. IT IS IMPOSSIBLE TO WARRANTY AGAINST PESTS AT A GIVEN VEGETATIVE PERIOD EVEN IF PROTECTIVE MEASURES HAVE BEEN APPLIED.

AGENTS OF FUNGUS DISEASES AND SPORES MAY SURVIVE IN THE SOIL OR ON THE PLANT REMAINS OVER SEVERAL YEARS. IN ADDITION, THEY CAN TRAVEL AS FAR AS 50 KM BY WIND OR WATER. INSECTS CAN REPRODUCE SEVERAL GENERATIONS OVER THE SEASON, AND THEIR LARVAE AND EGGS ARE ABLE TO SURVIVE THE COLDEST WINTER IN THE SOIL OR UNDER THE BARK. BACTERIA AND WEEDS ARE UNDEMANDING EITHER. THAT IS WHY THE EFFICIENT PEST CONTROL REQUIRES A COMBINATION OF MEASURES: FROM PRUDENT CROP ROTATION AND COMPATIBILITY CONTROL TO MECHANICAL AND CHEMICAL PROTECTION OF PLANTS. BACTERIA ARE ABLE TO WITHSTAND THE EXTREME TEMPERATURES. THE SAME IS TRUE OF WEEDS. IT IS IMPOSSIBLE TO SECURE FIELDS AGAINST PESTS, WHEREAS THE PEST RISK AND THE RESULTING HARM CAN BE SIGNIFICANTLY REDUCED THROUGH TIMELY MEASURES.

ONE OF THE PRIMARY MEASURES IS TO CREATE SANITARY CONDITIONS. WHAT DOES IT MEAN?

- IT IS KNOWN THAT DISEASE AGENTS REMAIN AND WINTER ON PLANT RESIDUES. TO DEPRIVE THE AGENTS OF THEIR GROWING MEDIUM AND THEREFORE REDUCE THE RISK OF DISEASES, IN AUTUMN, AFTER HARVESTING IS OVER, THE REMAINS OF THE CROPS MUST BE SHREDDED AND MIXED WITH THE SOIL, IF POSSIBLE, TWICE: FIRST TO A DEPTH OF 15 CM, AND IN THREE WEEKS TO A DEPTH OF 25–30 CM. THE SAME METHOD CAN BE APPLIED AGAINST NEMATODE AND OTHER PESTS.
- USE OF DISINFECTED AND PRE-TREATED SEEDS REDUCES THE RISK OF DISEASES.
- GROW VARIETIES RESISTANT TO DISEASES AND DAMAGE, THOUGH NONE OF THE EXISTING VARIETIES IS RESISTANT TO ANY DISEASES. IT IS NEVER TO FORGET THAT USE OF ONE AND THE SAME RESISTANT VARIETY OF CROP RESULTS IN DISEASE AGENTS OR PESTS DESTROYING ITS RESISTANCE VERY QUICKLY.
- THE LAST BUT NOT LEAST PREVENTIVE MEASURE IS A PRUDENT ROTATION OF CROPS.

INFLUENCE OF PREDECESSORS IN TERMS OF THE MOST FREQUENT PLANT PROTECTION CONCERNS

PREDECESSOR	CABBAGE	CARROTS	SUGAR BEET	ONION	POTATOES	RAPESEED	LETTUCE	CUCUMBERS	SPIKED CEREALS	GRASS	MAIZE	PEAS
RAPESEED	OZ		A		Z	OZ				ZV		
SPIKED CEREALS									Z	V		A
GRASS												
PEAS			AS	A	A		AZ	AZ		H		AZ

- A — NEMATODE
- H — WEEDS
- N — EXCESS OF NITROGEN (AFTEREFFECT)
- O — CONSECUTIVE GROWING IN THE SAME YEAR IS UNFAVOURABLE
- S — SOIL STRUCTURE DETERIORATION
- V — WIREWORMS, LARVAE, CATERPILLARS
- Z — FUNGUS DISEASES

THERE ARE TWO MAIN METHODS TO PROTECT CROPS:

- MECHANICAL;
- CHEMICAL.

IF MECHANICAL REMEDIES AGAINST WEEDS AND PESTS PROVE TO BE INSUFFICIENT USE THE CHEMICALS. BUT EVEN THE CHEMICALS ARE NOT EFFICIENT AGAINST SUCH PESTS AS NEMATODES AND SUCH CAUSAL AGENTS AS PLASMODIA AND VIRUSES. THEREFORE, IT IS EASIER AND CHEAPER TO PREVENT SUCH PESTS THAN TO COMBAT THEM. IF A HOTBED OF A DISEASE HAS EMERGED IN THE FIELD, TAKE MEASURES TO CONTAIN AND DESTROY IT. IT IS VITALLY IMPORTANT NOT TO SPREAD THE DISEASE OVER THE FIELD. IN PARTICULAR, THE AGRICULTURAL MACHINES CAN PROMOTE SPREADING THE DISEASE AGENTS. FOR THIS REASON IT IS ADVISABLE TO START TREATING UNAFFECTED AREAS BEFORE MOVING ON TO THE AFFECTED ONES.

THE AVAILABLE PEST CONTROL SPRAYERS RANGE FROM SMALL BACKPACK SPRAYERS TO LARGE SELF-PROPELLED SPRAYERS WITH A WORKING WIDTH OF 45 M. AGROMASH-HOLDING OFFERS STATE-OF-THE-ART TRAILED AND MOUNTED SPRAYERS WITH A WORKING WIDTH OF 12 TO 27 M.

THINGS TO REMEMBER:

- IF YOU HAVE DETECTED THE FIRST SIGNS OF A DISEASE ON YOUR FIELD ALWAYS USE THE CORRECT FUNGICIDE THE SAME DAY. DO NOT WAIT FOR THE DISEASE TO AFFECT HALF OF YOUR CROPS. IN SOME CASES IT IS NECESSARY TO SPRAY PREVENTIVELY.
- IF YOU WANT TO GET RID OF WEEDS USING CHEMICALS REMEMBER THAT WEEDS ARE HIGHLY SUSCEPTIBLE TO CHEMICALS IN THE 2-3 LEAF STAGE. TIMELY TREATMENT YIELDS BETTER RESULTS WITH LESS HERBICIDE SPRAYED.
- PRIOR YOU SCHEDULE SPRAYING CHECK THE WEATHER FORECAST. IT MAKES NO SENSE TO SPRAY CONTACT PESTICIDE IF AN HOUR LATER IT IS WASHED AWAY WITH RAIN. ON THE OTHER HAND, SOIL PESTICIDES SHOULD BE SPRAYED BEFORE RAIN TO HELP THEM PENETRATE THE SOIL. SPRAYING IN WINDY WEATHER MAY RESULT IN AFFECTING THE ADJACENT CROPS WITH PESTICIDE.
- WHEN USING DIFFERENT PESTICIDES WITH THE SAME EFFECT IT IS RECOMMENDED TO ROTATE THEM. THE MAJORITY OF DISEASE AGENTS AND PESTS BECOME RESISTANT TO CHEMICALS VERY QUICKLY.
- SOME CHEMICALS CAN BE MIXED TO BOOST THEIR EFFICIENCY. THIS DOES NOT NECESSARILY APPLY TO ALL CHEMICALS. TAKE CARE TO READ THE APPLICATION INSTRUCTIONS ON THE BAG OR THE VESSEL. ALWAYS MAKE A TRIAL MIXTURE IN A SEPARATE VESSEL TO CHECK COMPATIBILITY OF THE CHEMICALS.



MOUNTED SPRAYER

- THREE-POINT MOUNTING.
- CARDAN SHAFT.
- CATEGORY II LINK BAR.



SPECIFICATIONS

- REAL TANK VOLUME 660 TO 1 650 L (RATED VOLUME 600 TO 1 500 L)
- PISTON DIAPHRAGM PUMP (1 58 L/MIN), 0 TO 20 BAR
- REMOTE CONTROL SYSTEM WITH ELECTRIC PRESSURE ADJUSTMENT, 5-7 SPRAY LINES
- HYDRAULIC HEIGHT ADJUSTMENT
- TANK CLEANING INSIDE, RINSE TANK (88 TO 1 24 L) AND HAND WASH TANK
- AGITATION CAN BE SWITCHED OFF
- FEED WHEELS AND WATERLINE FILLING CONNECTION FA
- FILLING CHAMBER WITH AN INJECTOR
- QUICK PRESSURE ADJUSTMENT
- VESSEL CLEANER FOR CHEMICAL CONTAINERS
- EXTERIOR CLEANING KIT WITH HOSE REEL AND BRUSH
- PROTECTED NOZZLES FOR FULL WORKING WIDTH

AGROMASH	ON 660/12	ON 880/12	ON 880/15	ON 1100/15	ON 1650/18
REAL VOLUME [L]	660	880	880	1 100	1 650
RATED VOLUME [L]	600	800	800	1 000	1 500
WORKING WIDTH [M]	12	12	15	15	18
COVERAGE, MAX. [HA/H]	8.0	8.4	10.0	10.5	12.6
RINSE TANK / HAND WASH TANK [L]	88/15	124/15	124/15	124/15	124/15
LENGTH WITH SPRAY BOOMS [CM]	146	150	158/178	158/178	178/204
TRANSPORT WIDTH WITH SPRAY BOOMS [CM]	275	275/298	275/298	298	298
HEIGHT [CM]	244	244	230	230	236
WEIGHT [KG]	348	415	686	960	1 100

TRAILED SPRAYER

THE ADVANCED FUNCTION CONTROL TECHNOLOGIES ENSURE HIGH EFFICIENCY OF OP 3600, ESPECIALLY ON LARGE FIELDS. PRACTICAL AND ROBUST SPRAYER DESIGN MEETS ALL MODERN REQUIREMENTS OF CROP GROWING: HIGH ACCURACY CONTROL SYSTEM. SAFETY. COST-EFFECTIVE POWERFUL IMPLEMENT FOR RESOURCE SAVING TECHNOLOGIES. EFFICIENCY AND HIGH QUALITY.



SPECIFICATIONS

TANK LEVEL INDICATOR LOCATED OUTSIDE IS EASY TO READ BOTH FROM THE CAB AND FROM THE FILLING PLACE. CENTRAL OPERATOR STATION ON THE LEFT SIDE. EASY TWO-LEVER SERVICE. ALL LEVER POSITIONS ARE CLEARLY MARKED TO ENSURE CORRECT FUNCTION SELECTION. AGROCHEMICALS ARE ADDED TO THE TANK FROM THE GROUND AT ARM'S LENGTH TO THE CENTRAL OPERATOR STATION TO ENSURE SAFE FILLING. THE FILLING STATION FEATURES A FILLER VALVE AND A VESSEL CLEANER. ROBUST FRAME CAPABLE OF CARRYING TWO TONS AND A 40° TURNING ANGLE ARE THE KEY FEATURES OF AN EXTREMELY STIFF DRAWBAR. OVERLOADS ARE EXCLUDED, THE SPECIFIED TURNING ANGLE HELPS SAVE TIME WHEN MANEUVERING THE SPRAYER IN THE TRACK. THE WORKING BOOM WIDTH RANGES FROM 18 TO 30 M. A VERTICALLY MOUNTED SUCTION FILTER AND A DRAIN VALVE ALLOW FOR FILTER CLEANING WITHOUT SOLUTION LEAKING OUTSIDE (ALSO WITH A FULL TANK) THUS REDUCING ENVIRONMENTAL CONCERNS. FOLDING BOOMS ENSURE SAFE ROAD TRANSPORTATION. THE TRANSPORT PLATFORM AND LADDER REMAIN ACCESSIBLE EVEN WITH FOLDED BOOMS. THE SPRAY GUN WITH ADJUSTABLE WATER PRESSURE AND A SELF-WINDING HOSE REEL (20 M LONG HIGH PRESSURE HOSE) GUARANTEE QUICK, EASY AND CONVENIENT RINSING ANYWHERE AND ANYTIME.

AGROMASH	OP 2800	OP 3600	OP 4600
TOTAL/ WORKING VOLUME [L]	2800/2500	3600/3200	4600/4200
WORKING BOOM WIDTH [M]	21	24	27
COVERAGE, MAX. [HA/H]	12.6	12.6	16.2
RINSE TANK / HAND WASH TANK [L]	290/15	460/24	460/42
WEIGHT WITH BOOMS / WITHOUT BOOMS [KG]	2955/2005	3730/2390	3790/2450
TRACK WIDTH [M]	1.50-2.0	1.50-2.0	1.50-2.0
CLEARANCE [CM]	71	65-85	65-85
TRANSPORT SPEED [KM/H]	25	25	40

FERTILIZER SPREADER



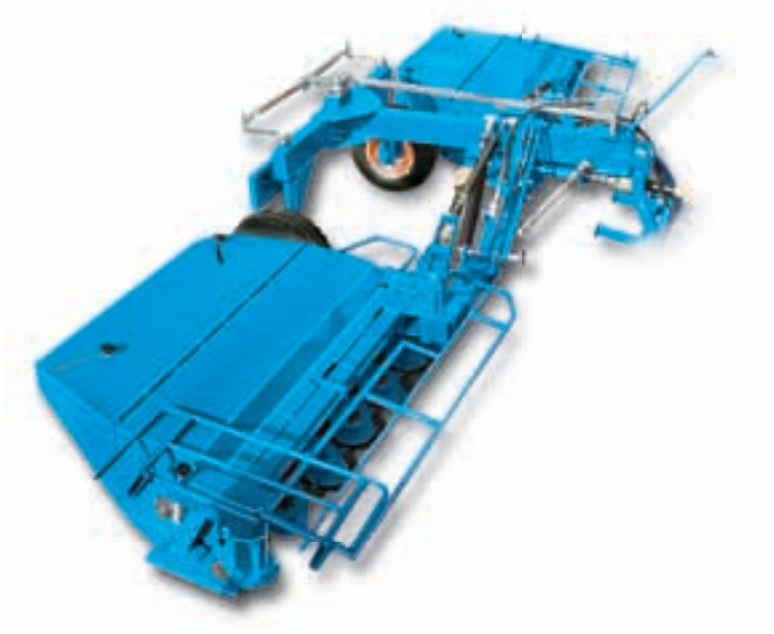
SPECIFICATIONS

AGROMASH RMUN IS DESIGNED FOR SPREADING FERTILIZERS IN FIELDS. HOPPER VOLUME RANGES FROM 1 500 TO 2 100 L. SPREADER DISCS SPREAD GRANULATED FERTILIZERS EVENLY AT WIDTH RANGING FROM 6 TO 32 M. FERTILIZER SPREAD RATE CAN BE ADJUSTED FROM 3 TO 1 000 KG/HA AT WIDTH 24 M AND FIELD SPEED 8 KM/H . THE IMPLEMENT IS COMPATIBLE WITH CATEGORY 1 .4 OR 2 TRACTOR.

AGROMASH	RMUN 1500	RMUN 1600	RMUN 1900	RMUN 2100
HOPPER VOLUME [L]	1500	1600	1900	2100
WIDTH [M]	2.30	2.30	2.30	2.30
MINIMAL LOAD HEIGHT [M]	1.05	1.05	1.05	1.05
WEIGHT [KG]	296	350	360	316
COVERAGE, MAX. [HA/H]	13.0	13.1	13.3	13.5



AGROMASH KND, KPD, KDK



MOUNTED, TRAILED DISC MOWERS AND COMBINATION

MOUNTED DISC MOWERS ARE DESIGNED FOR FORAGE CROPS SWATHING OR WINDROWING. A RANGE OF AGROMASH DISC MOWERS FEATURES MOUNTED DISC MOWERS WITH OR WITHOUT CONDITIONERS, FRONT-TYPE OR REAR-MOUNTED MOWERS, AND MOWER COMBINATIONS. THE VARIETY OF MOWERS CAN MEET DEMANDS OF EVEN THE MOST DISCERNING CUSTOMERS.

SPECIFICATIONS

MOUNTED DISC MOWERS

AGROMASH KND	245 KV	210 KV	320 KV	245 KV	210 KV	285 KV	245 KV	165 KV
WORKING WIDTH [M]	2.45	2.1	3.2	2.45	2.1	2.85	2.45	1.65
NUMBER OF DISCS	6	5	8	6	5	7	6	4
NUMBER OF KNIVES/DISC	2	2	2	2	2	2	2	2
TRACTOR POWER CLASS [HP]	80-90	80-90	100-130	80-90	80-90	80-90	80-90	50-80
COVERAGE, MAX. [HA/H]	1.6	1.3	2.0	1.6	1.3	1.8	1.6	1.1
CONDITIONER	+	+	+	+	+	-	-	-
PTO SPEED [RPM]	540	540	1000	1000	1000	540	540	540
WEIGHT [KG]	780	650	1250	860	800	560	500	340

TRAILED DISC MOWERS

AGROMASH KPD	320 KV	285 KV	285	320 KB
WORKING WIDTH [M]	3.2	2.85	2.85	3.2
NUMBER OF DISCS	8	7	7	8
NUMBER OF KNIVES/DISC	2	2	2	2
TRACTOR POWER CLASS [HP]	100-130	90-100	80-90	100-130
COVERAGE, MAX. [HA/H]	2.0	1.8	1.9	2.0
CONDITIONER	+	+	+	-
PTO SPEED [RPM]	540	540	1000	1000
WEIGHT [KG]	1680	1550	1320	1500

DISC MOWER COMBINATIONS

AGROMASH KDK	950 KB	750 KB
WORKING WIDTH [M]	9.5	7.5
NUMBER OF DISCS	21	18
NUMBER OF KNIVES/DISC	2	2
TRACTOR POWER CLASS [HP]	180-210	150-180
COVERAGE, MAX. [HA/H]	5.2	4.5
CONDITIONER	+	+
PTO SPEED [RPM]	540	540
WEIGHT [KG]	3030	2450

FINGER WHEEL RAKES



SPECIFICATIONS

SEMI-TRAILED AND TRAILED FINGER WHEEL RAKES ARE DESIGNED FOR DRIED GRASS AND STRAW WINDROWING, TEDDING, MERGING WINDROWS AND REVERSING OF WINDROWS EXPOSED TO RAIN. EVEN DELICATE FORAGE LIKE ALFALFA WILL BE PUSHED GENTLY INTO A LOOSE AND FLUFFY WINDROW. ADVANTAGES OF FINGER WHEEL RAKES:

- HIGH QUALITY SPRING STEEL FINGERS OF SPECIAL SHAPE PROVIDE FOR A FAILURE-FREE OPERATION IN TWO PLANES EVEN IF STONES GET IN THE WAY. THE FINGER SHAPE ENSURES THAT SEVERAL FINGERS SIMULTANEOUSLY CONTACT THE FIELD SURFACE WHICH CONTRIBUTES TO GENTLE TREATMENT OF THE SOIL AND GUARANTEES A FLUFFY AND CLEAN WINDROW.
 - THE WHEEL HUB RUNS ON TWO BEARINGS, NOT ON CAPRON BUSHINGS.
 - VERTICALLY MOUNTED WHEELS EASILY FOLLOW THE GROUND CONTOUR.
 - THE RAKE IS HYDRAULICALLY OPERATED FROM THE CAB WHICH MEANS IT IS EXTREMELY EASY TO TURN AND MOVE FROM ONE FIELD TO THE NEXT.
 - INDEPENDENT SPRING SUPPORTED WHEELS ON ALL RAKE MODELS EASILY ADAPT TO GROUND CONTOUR AND ENSURE HIGH QUALITY OF GRASS TREATMENT.
 - WHEN THE GRASS STAND IS LOW THE WHEELS CAN BE FITTED WITH PLASTIC OR METAL PROTECTIVE SHIELDS.
 - IT IS POSSIBLE TO MOUNT CENTRAL WHEELS FOR TEDDING GRASS TO BE FORMED IN A WINDROW.
- THE RAKE CAN BE USED FOR ARTIFICIAL FORAGE HERBS OR FOR NATURAL HAYFIELDS.

AGROMASH	GKP 10	GKP 12	GKP 14	GKP 16
WORKING WIDTH [M]	7.30	8.30	9.45	10.30
COVERAGE, MAX. [HA/H]	3.0	3.4	3.9	4.3
TRANSPORT WIDTH [M]	2.44	2.44	2.44	2.44
WHEELS, TYPE/NUMBER	205/70-15/4	205/70-15/4	205/70-15/6	205/70-15/6
LENGTH [M]	6.10	7.00	7.39	1.020
WEIGHT [KG]	1290	1390	1630	1875

BALERS



SPECIFICATIONS

TWIN TWINE BINDING SYSTEM IS FITTED IN ALL BALER MODELS. THE NUMBER OF TWINE ROTATIONS AND SPACING BETWEEN THEM CAN BE ADJUSTED. THE TWINE SPOOL CHAMBER HAS ENOUGH TWINE IN STOCK AND IS EASILY ACCESSIBLE. THE PICK-UP WITH TWO FEEDER AUGERS ON BOTH SIDES AND TWO HEIGHT ADJUSTABLE BAFFLES ENSURE FEEDING INTO THE CHAMBER ENTRANCE EVEN WHEN BAILING OVERSIZED WINDROWS. WELL-FORMED BALES RESULT FROM TO-AND-FRO DRIVE FEEDING THE GRASS INTO A COMPRESSION CHAMBER. THE COMPACT ONBOARD MONITOR HELPS CONTROL MAIN BALING FUNCTIONS.

AGROMASH	PPR 120x120	PPR 120x150
BALE SIZE [CM]	120x120	120x150
BINDING SYSTEM	TWINE	TWINE
PTO [RPM]	540	540
PERFORMANCE, MAX. [T/H]	6-10	8-12
TRACTOR POWER CLASS [HP]	80-90	80-90
WORKING WIDTH [CM]	200	200
DIMENSIONS: LENGTH/WIDTH/HEIGHT [CM]	248/194/330	248/230/358
WEIGHT [KG]	1920	2110

BALE WRAPPER



SPECIFICATIONS

THE WRAPPER IS DESIGNED FOR WRAPPING BALES AT MOISTURE UP TO 55% INTO SPECIAL STRETCHING PLASTIC SHEET TO KEEP NUTRITIONAL VALUE OF FORAGE WITHOUT PRESERVATIVES AND MINIMIZE LOSSES. SELF-LOADING AND UNLOADING OPERATION. ALL FUNCTIONS ARE OPERATED FROM THE CAB.

AGROMASH	OR 120x160
BALE SIZE: DIAMETER/HEIGHT [CM]	120x160
PERFORMANCE, MAX. [BALES/H]	8-12
DIMENSIONS: LENGTH/WIDTH/HEIGHT [CM]	480/187/83
MACHINE WEIGHT [KG]	860
MAX. BALE WEIGHT [KG]	850

STRAW MULCHER



SPECIFICATIONS

HARVESTING IS NOT LIMITED BY GRAIN HARVESTING ONLY. VERY OFTEN THE MAIN PROBLEM FACED BY FARMS IS THE SO CALLED TAILINGS. THERE IS A DIRECT RELATIONSHIP BETWEEN STRAW AND GRAIN YIELD THAT IS WHY A LOT OF FARMS, IN PARTICULAR THOSE YIELDING BIG GRAIN CROPS, FACE A PROBLEM OF STUBBLE RESIDUE. SOME FARMS BURN OUT STUBBLES, WHICH RESULTS NOT ONLY IN BIG PENALTIES BUT DETERIORATES THE SOIL STRUCTURE. USE OF INTEGRATED COMBINE SHREDDERS IS ONE OF THE ALTERNATIVE SOLUTIONS THOUGH WITH LOTS OF DISADVANTAGES, THE MAIN OF WHICH IS LOWER PERFORMANCE AND HIGHER GRAIN LOSSES. IN ANY CASE, EVEN WITH THE IDEALLY TUNED COMBINE HARVESTER STRAW SHREDDING ALLOWS LOSSES FROM 1 DT/HA. ANOTHER DRAWBACK IS INTENSIVE DISC TILLAGE OF SOIL. IN CASE OF BIG YIELDS THIS MEANS LOSS OF TIME, FUEL AND, IN PARTICULAR, MOISTURE AS THE OPERATION REQUIRES TWO OR THREE PASSES, WHICH RESULTS IN DELAYED SOWING OF WINTER CROPS. THE ALL-IN-ONE SOLUTION IS USE OF SPECIAL MULCHERS WHICH ARE DESIGNED FOR PLANT RESIDUE SHREDDING AND MULCHING. AGROMASH-HOLDING OFFERS MULCHERS FOR ANY PLANT RESIDUES, ANY FIELD SIZE AND ANY CROP YIELD, WHICH CAN OPERATE ALONG OR ACROSS THE WINDROW. THE COST EFFECTIVENESS OF THIS SOLUTION IS SO HIGH THAT THESE IMPLEMENTS EARN THEIR KEEP TWICE IN THEIR VERY FIRST FIELD SEASON.

AGROMASH	MIS 280	MIS 400
WORKING WIDTH [M]	2.8	4.0
NUMBER OF KNIVES	68	96
SPIKED CEREAL CROP YIELD [DT/HA]	UP TO 45	OVER 45
COVERAGE, MAX. [HA/H]	3.0	4.3
TRACTOR POWER CLASS [HP]	90-130	150-180



MOUNTED HEADER



SPECIFICATIONS

THE STATE-OF-THE-ART CUTTING PLATFORM ZHKN-5SH/6SH/7SH CUTS AND FEEDS THE GRAIN INTO THE THRESHING UNIT. IT IS COMPATIBLE WITH ANY COMBINE HARVESTERS OF AGROMASH RANGE. FOR IMPROVED PERFORMANCE THE HEADER FEATURES A LARGER DIAMETER INTAKE AUGER FOR ANTI-WRAPPING PROTECTION.

	ZHKN - 5SH	ZHKN - 6SH	ZHKN - 7SH
WORKING WIDTH [M]	2.98	2.98	4.40
COVERAGE PER HOUR AT A SPEED OF 7.5 KM/H [HA]	4.4	5	5.8
CUTTING WIDTH [M]	5	6	7
FIELD SPEED [KM/H]	8	8	8
TRANSPORT SPEED [KM/H]	15	15	15
CUTTING HEIGHT [MM]	50-950	50-950	50-950
WEIGHT [KG]	1710	1780	1860

MOUNTED SOYBEAN HEADER



SPECIFICATIONS

THE CLOSE-CUTTING MOUNTED SOYBEAN HEADER ZHS-5/6/7 WITH FLOATING CUTTERBAR IS USED TO HARVEST SOYBEANS, RICE AND SPIKED CEREALS.

DESIGN SPECIFICS:

- FLOATING CUTTERBAR IS MOUNTED ON A SPECIAL SUSPENSION CONSISTING OF LEVERS WHICH COUPLE CUTTERBAR SHOES WITH THE HEADER BODY;
- LOCATION OF SHOES ENSURES THAT THE CUTTERBAR ACCURATELY FOLLOWS THE GROUND CONTOURS BOTH LENGTHWISE AND CROSSWISE;
- CUTTERBAR IS RIGIDLY LOCKED WITH THE HEADER BODY;
- KNIFE WITH A SWASH PLATE DRIVE.

	ZHS - 5	ZHS - 6	ZHS - 7
COVERAGE PER HOUR AT SA PEED OF 7.5 KM/H [HA]	3.7	4.4	5.1
CUTTING WIDTH [M]	5	6	7
FIELD SPEED [KM/H]	4	4	4
TRANSPORT SPEED [KM/H]	14	14	14
CUTTING HEIGHT [MM]	30-950	30-950	30-950
DIMENSIONS [MM]	3580x5400x1710	3580x6400x1710	3580x7400x1710
WEIGHT [KG]	1840	2020	2170

TALL-STALKED CROP HEADER



TALL-STALKED CROP HEADER

THE TALL-STALKED CORN HEADER IS INTENDED FOR CUTTING MAIZE OR OTHER FORAGE CROP AND FEEDING IT TO THE CHOPPING DRUM. THE HEIGHT-ADJUSTABLE REEL ALLOWS FOR CUTTING OF UP TO 4.5 M TALL PLANTS. THE HEADER IS FITTED WITH AN IMPROVED SCHUMACHER CUTTERBAR.



SPECIFICATIONS

TALL-STALKED CROP HEADER	
PERFORMANCE PER HOUR [T]	UP TO 150
CUTTING WIDTH [M]	3.7
FIELD SPEED [KM/H]	UP TO 18
TRANSPORT SPEED [KM/H]	UP TO 30
CUTTING HEIGHT [MM]	60
DIMENSIONS [MM]	3000x4250x2900
WEIGHT [KG]	1600

GRASS HEADER

GRASS HEADER

THE HEADER IS INTENDED FOR CUTTING GREEN GRASS. IT IS COMPATIBLE WITH THE SELF-PROPELLED FORAGE COMBINE HARVESTER AGROMASH KSK 11. THE HEADER ACCURATELY FOLLOWS THE GROUND CONTOURS BOTH LENGTHWISE AND CROSSWISE. THE CUTTERBAR HAS A PLANETARY GEAR DRIVE.



SPECIFICATIONS

GRASS HEADER	334.01.00.00.000
CUTTING WIDTH [M]	4.95
PERFORMANCE [T/H]	64 ÷ 72
THROUGHPUT (AT MOISTURE OF 75% , YIELD OF AT LEAST 20 T/HA), MIN. [KG/SEC]	18 ÷ 20
FIELD SPEED [KM/H]	10
TRANSPORT SPEED [KM/H]	20
ADAPTATION TO GROUND CONTOUR:	
● LENGTHWISE [MM]	-60... +120
● CROSSWISE [MM]	±120
DIMENSIONS [MM]	2200x5450x1280
WEIGHT [KG]	1600

PLATFORM PICKUP

THE PLATFORM PICKUP IS DESIGNED TO PICK UP WINDROWS OF GRAIN, CEREALS, BEAN CROPS AND GROATS. IT IS MOUNTED ON THE FEEDER HOUSE OF COMBINES YENISEI-1 200 NM, YENISEI-950, YENISEI-960 AND THEIR VARIANTS.



SPECIFICATIONS

	PPK-4
TYPE	MOUNTED
CUTTING WIDTH [M]	3.47
DRY WEIGHT [KG]	10.47
ELEVATOR DRIVE	VARIATOR V-BELT DRIVE UPPER PULLEY
ELEVATOR SHAFT SPEED [RPM]	150 TO 380
ELEVATOR LINEAR SPEED [M/SEC]	0.87 TO 2.2
NUMBER OF ELEVATOR BELTS	1
DIMENSIONS [MM]	4400/2730/1 230

WINDROW PICKUP

WINDROW PICKUP

THE ATTACHMENT IS INTENDED FOR PICKING UP WINDROWS AND FEEDING THEM TO THE CHOPPING DRUM.



SPECIFICATIONS

ПЛАТФОРМА-ПОДБОРЩИК ПОДВЯЛЕННЫХ ТРАВ	334.02.00.00.000	334.02.00.00.000 - 01
TYPE	MOUNTED	
TOOL DRIVE	BUSH ROLLER CHAIN DRIVEN BY COMBINE GEARBOX	
PICKUP	DRUM WITH TINES	
PERFORMANCE, [T/H]	57	64
WORKING WIDTH [M]	3	4
DRY WEIGHT [KG]	836	983
PICKUP DRIVE	V-BELT	
PICKUP SPEED [RPM]	84	84
INTAKE AUGER DRIVE	BUSH ROLLER CHAIN	
INTAKE AUGER SPEED [RPM]	159	159
DIMENSIONS (LENGTH/WIDTH/HEIGHT) [MM]	3070/1270/2086	3951/1270/2086

COMBINE HARVESTERS

HARVESTING MACHINES



SELF-PROPELLED COMBINES AGROMASH ARE DESIGNED FOR SINGLE- OR TWO-STAGE HARVESTING OF GRAIN, RICE, PULSE CROPS, GROATS, SUNFLOWER, GRASS SEEDS, SOYBEANS, INDUSTRIAL CROPS IN ALL CEREAL-GROWING AREAS.

THE HARVESTERS CAN BE FITTED WITH A CROP HEADER, A PICKUP OR A RIPPLER TO SUIT THE NEEDS OF THE HARVESTING METHOD. DEPENDING ON THE SELECTED PROCESS OF TAILINGS HARVESTING, COMBINES CAN BE FITTED WITH A COWL, A STACKER OR A STRAW SPREADER. OPTIONALLY, THE HEADER CAN COME WITH A ROAD TRANSPORT TRAILER.

COMBINES AGROMASH ARE SUITABLE FOR HARVESTING OF HARD-TO-THRESH CROPS, EFFICIENT ON HIGH-YIELD FIELDS, AS WELL AS ON MOIST SOILS IN HIGHLY HUMID AREAS (TRACK-TYPE VARIANT).

YENISEI 1 200 RM

KSK 11

YENISEI 858

CATEGORY 3

CATEGORY 4

CATEGORY 5

YENISEI 950

4121

5121

YENISEI 954

4141

5141

YENISEI 1 200 NM

YENISEI 1 200 1 NM

GUARANTEE
OF SUCCESSFUL
HARVESTING





SELF-PROPELLED COMBINE HARVESTER

COMBINE FOR HARVESTING LOW TO MEDIUM CROP YIELDS. THE SIGNIFICANT THROUGHPUT AND PERFORMANCE ARE ENSURED BY THE DOUBLE-DRUM THRESHING SYSTEM. IT IS HIGHLY EFFICIENT FOR HARVESTING HARD-TO-THRESH, MOIST OR WEEDY CROPS. THE FIRST THRESHING DRUM IS REVERSIBLE TO EASILY REMOVE THE CLOGGING OF THE DRUM. THE COMBINE IS EQUIPPED WITH A COMFORTABLE CAB, A DIESEL ENGINE OF 145-185 HP, A HYDROSTATIC TRANSMISSION REINFORCED WITH THE DRIVE AXLE. OPTIONALLY, THE COMBINE CAN FEATURE CROSS-COUNTRY TIRES 28LR-26 WITH LOW GROUND PRESSURE OR CROSS-COUNTRY TIRES 16.0-20 ON THE STEERABLE WHEELS. YENISEI 1200 1 NM IS A CONVENTIONAL SINGLE-DRUM VARIANT OF THE BASE MODEL.



SPECIFICATIONS

YENISEI 1200 1 NM IS A CONVENTIONAL SINGLE-DRUM VARIANT OF THE BASE MODEL. THE ACTIVE SEPARATION AREA IS 25% LARGER THROUGH LONGER STRAW WALKER SECTIONS.

	YENISEI 1200 1 NM	YENISEI 1200 NM
TYPE	SELF-PROPELLED, WHEEL-TYPE	SELF-PROPELLED, WHEEL-TYPE
PERFORMANCE, MIN. [T/H]	9-10	10-11
CUTTING WIDTH [M]	5,6,7	5,6,7
PICKUP WORKING WIDTH [M]	2.75	2.75
THRESHING SYSTEM:		
● NUMBER OF THRESHING DRUMS	1 BEATER DRUM	2 BEATER DRUM
● THRESHER WIDTH [MM]	1200	1200
● STRAW WALKER AREA [SQ.M]	4.4	3.5
● SIEVE AREA [SQ.M]	3.6	3.6
● GRAIN TANK VOLUME [CUBIC M]	4500	4500
● UNLOADING SPEED [L/SEC]	30	30
ENGINE	YAMZ-236DK-9; AMZ D-442-571-1	YAMZ-236DK-9; AMZ D-442-571-1
MOTOR INSTALLATION AND RUNNING GEAR:		
● POWER [kW (HP)]	136 (185)	136 (185)
● FUEL TANK VOLUME [L]	300	300
● DRIVE AXLE	MVG-12	MVG-12
● TRANSMISSION DRIVE	HYDRAULIC	HYDRAULIC
DIMENSIONS AND WEIGHT WITH 6 M HEADER		
● LENGTH [M]	10.490	10.490
● WIDTH [M]	6.480	6.480
● HEIGHT [M]	3.95	3.95
● WEIGHT WITH 6 M HEADER [KG]	10950	10950

YENISEI CATEGORY 3

SELF-PROPELLED COMBINE HARVESTER

COMBINE FOR HARVESTING MEDIUM TO HIGH CROP YIELDS. CENTRAL LOCATION OF THE CAB AND THE GRAIN TANK, THE ENGINE 185 HP BEST SUITED TO THIS CATEGORY OF MACHINES, IMPROVED FIELD AND TRANSPORT LIGHTING SYSTEM, FOUR ADDITIONAL HEADLIGHTS FOR BETTER CUTTERBAR ILLUMINATION, REINFORCED DRIVE AXLE MVB-12, HYDROSTATIC TRANSMISSION, CROSS-COUNTRY TIRES, STONE RETARDER TO PROTECT THE THRESHING SYSTEM, LARGER VOLUME GRAIN TANK AND IMPROVED GRAIN CLEANING SYSTEM TURNED AGROMASH 3 SERIES HARVESTERS INTO THE CIS MARKET LEADER.



SPECIFICATIONS

DEPENDING ON THE APPLICATION AREA, OPERATION CONDITIONS AND SELECTED HARVESTING PROCESS, THE COMBINE CAN BE FITTED WITH A 5.0, 6.0 OR 7.0 M CUTTERBAR FOR A SINGLE-STAGE GRAIN HARVESTING, A PICKUP FOR PICKING UP GRAIN WINDROWS, A CHOPPER, A STACKER OR A COWL FOR HARVESTING OF TAILINGS.

TYPE	YENISEI 950	YENISEI 954
	SELF-PROPELLED, WHEEL-TYPE	SELF-PROPELLED, WHEEL-TYPE
PERFORMANCE, MIN.: RICE/GRAIN [T/H]	9-10	10-11
CUTTING WIDTH [M]	5, 6, 7	5, 6, 7
PICKUP WORKING WIDTH [M]	2.75	2.75
NUMBER OF THRESHING DRUMS	1 BEATER DRUM	2 BEATER DRUM
THRESHER WIDTH [MM]	1200	1200
STRAW WALKER AREA [SQ.M]	4.4	3.5
SIEVE AREA [SQ.M]	3,6	3,6
GRAIN TANK VOLUME [L]	5000	5000
UNLOADING SPEED [T/MIN]	42	42
ENGINE	YAMZ-236 DK-9	YAMZ-236 DK-9
RATED POWER [KW (HP)]	136 (185)	136 (185)
FUEL TANK VOLUME [L]	300	300
DRIVE AXLE	MVB-12	MVB-12
TRANSMISSION DRIVE	HYDRAULIC	HYDRAULIC
LENGTH [M]	10.390	10.390
WIDTH [M]	6.440	6.480
HEIGHT [M]	3.950	3.950
WEIGHT WITH 6 M HEADER [KG]	11010	11010

AGROMASH-YENISEI KZS

CATEGORY 4



SELF-PROPELLED CATEGORY 4 COMBINE HARVESTER

COMBINE FOR SINGLE- OR TWO-STAGE GRAIN HARVESTING.

IT IS INTENDED FOR HIGH CROP YIELDS AND CAN BE USED ON HUMID SOIL.



SPECIFICATIONS

AGROMASH	4141	4121
PERFORMANCE [T/H]	14	14
CUTTING WIDTH [M]	6; 7; 8.6	6; 7; 8.6
NUMBER OF THRESHING DRUMS	1 BEATER DRUM	1 BEATER DRUM, 2 TOOTH DRUMS
THRESHER WIDTH [M]	1.2	1.2
STRAW WALKER AREA [SQ.M]	5.0	4.32
SIEVE AREA [SQ.M]	3.7	3.7
GRAIN TANK VOLUME [L]	6500	6500
UNLOADING SPEED [HP]	80	80
ENGINE	SISU 74DSBAE	SISU 74DSBAE
POWER [kW (HP)]	169 (230) TO 183 (250)	169 (230) TO 183 (250)
SPECIFIC FUEL CONSUMPTION, MAX. [G/KWH]	211 TO 201	211 TO 201
FUEL TANK VOLUME [L]	400	400
LENGTH WITH 6M HEADER [M]	10.720	10.720
WIDTH WITH 6M HEADER [M]	6.530	6.530
HEIGHT WITH EXTENSION [M]	4.200	4.200
WEIGHT WITH 6 M HEADER [KG]	12800	13200

AGROMASH-YENISEI KZS CATEGORY 5

SELF-PROPELLED CATEGORY 5 COMBINE HARVESTER

HIGH PERFORMANCE COMBINE FOR YIELD OVER 40 DT/HA. COMBINE PERFORMANCE EXCEEDS 18 T/HA (GRAIN HARVESTING) AND PROVES TO BE BEST SUITED FOR CROP YIELDS OF 40 DT/HA AND MORE. ITS HIGH PERFORMANCE WITH MINIMUM THRESHING LOSSES EVEN IN CASE OF MOIST OR WEEDY GRAIN IS ENSURED BY THE THRESHING SYSTEM CONSISTING OF TWO TOOTH THRESHING DRUMS OF UNIQUE DESIGN IN COMBINATION WITH THE ACTIVE STRAW WALKER.



SPECIFICATIONS

SCHUMACHER CUTTERBAR WITH HIGHER OSCILLATION FREQUENCY, "AUTO CONTOUR" SYSTEM TO ENSURE THAT THE CUTTERBAR FOLLOWS THE GROUND CONTOURS ACCURATELY AND HYDRAULICALLY-DRIVEN 6-PADDLE REEL PROVIDE FOR EFFICIENT CUTTING OF CROPS. THE SIEVE CLEANING WITH DOUBLE AIR BLAST ENSURES THAT THE CROP COLLECTED IN THE GRAIN TANK IS OF HIGH PURITY AND QUALITY SO THAT NO ADDITIONAL TREATMENT IS NEEDED PRIOR TO STORING.

AGROMASH	5141	5121
TYPE	SELF-PROPELLED, WHEEL-TYPE	SELF-PROPELLED, WHEEL-TYPE
PERFORMANCE, MIN. [T/H]	18	18
CUTTING WIDTH [M]	6; 7; 8.6	6; 7; 8.6
NUMBER OF THRESHING DRUMS	1 BEATER DRUM	1 BEATER DRUM, 2 TOOTH DRUMS
THRESHER WIDTH [M]	1.5	1.5
STRAW WALKER AREA [SQ.M]	6.2	6.2
SIEVE AREA [SQ.M]	5.5	5.5
GRAIN TANK VOLUME [L]	9500	9500
UNLOADING SPEED, MAX. [T/MIN]	9.5	9.5
ENGINE	SISU 84DSBAE	SISU 84DSBAE
POWER [kW (HP)]	220 (300)	220 (300)
FUEL TANK VOLUME [L]	600	600
LENGTH [M]	10.900	10.900
WIDTH [M]	6.530	6.530
HEIGHT [M]	4.000	4.000
WEIGHT WITH HEADER [KG]	13500	13500



**GUARANTEE
OF SUCCESSFUL HARVESTING**



YENISEI 1200 RM

TRACK-TYPE RICE HARVESTER

COMBINE IS INTENDED FOR SINGLE- OR TWO-STAGE HARVESTING OF RICE, SOYBEANS AND GRAIN ON WATERLOGGED SOIL. IT FEATURES A PIN DRUM AND A BEATER DRUM TO ENSURE HIGH THRESHING PERFORMANCE AND REDUCE GRAIN CRUSHING. TRACK BELTS AND FRICTION GEAR STEERING ENSURE HIGH CROSS-COUNTRY ABILITY AND MANEUVERABILITY OF THE COMBINE.



SPECIFICATIONS

YENISEI 1200 RM	
SELF-PROPELLED, TRACK-TYPE	
TYPE	SELF-PROPELLED, TRACK-TYPE
PERFORMANCE, MIN.: RICE/GRAIN [T/H]	6/10
CUTTING WIDTH [M]	5
PICKUP WORKING WIDTH [M]	2.75
THRESHING SYSTEM:	
● THRESHER WIDTH [MM]	1200
● STRAW WALKER AREA [SQ.M]	3.5
● SIEVE AREA [SQ.M]	3.6
● GRAIN TANK VOLUME [L]	4500
● UNLOADING SPEED [T/MIN]	1.5-2.0
● NUMBER AND TYPE OF BLOWERS	2 AXIAL FLOW
● SPEED RANGE [RPM]	634-1852
ENGINE	AMZ D-442-511
MOTOR INSTALLATION AND RUNNING GEAR:	
● RATED POWER [kW (HP)]	136 (185)
● FUEL TANK VOLUME [L]	300
● DRIVE AXLE	KSPD 160
● TRANSMISSION DRIVE	MECHANICAL
DIMENSIONS AND WEIGHT WITH 6 M HEADER:	
● LENGTH [M]	10.49
● WIDTH [M]	6.48
● HEIGHT [M]	4.0
● WEIGHT WITH 6 M HEADER [KG]	12700

YENISEI 858

TRACK-TYPE RICE HARVESTER

COMBINE FOR RICE AND GRAIN HARVESTING IN HIGHLY HUMID AREAS FEATURES TRACK SYSTEM (OPTIONALLY, WITH REINFORCED RUBBER TRACK BELTS), CENTRALLY LOCATED CAB AND LARGER GRAIN TANK. IT IS FITTED WITH A FOUR-MOTOR HYDRAULIC DRIVE TRANSMISSION.



SPECIFICATIONS

YENISEI 858	
TYPE	SELF-PROPELLED, TRACK-TYPE
PERFORMANCE, MIN.: RICE/GRAIN [T/H]	6.0/10.0
CUTTING WIDTH [M]	5
PICKUP WORKING WIDTH [M]	2.75
THRESHING SYSTEM:	
● NUMBER OF THRESHING DRUMS	1 PIN DRUM, 2 BEATER DRUMS
● THRESHER WIDTH [MM]	1200
● STRAW WALKER AREA [SQ.M]	3.5
● SIEVE AREA [SQ.M]	3.6
● GRAIN TANK VOLUME [L]	5000
● UNLOADING SPEED [L/SEC]	42
● RATED POWER [kW (HP)]	184 (250)
MOTOR INSTALLATION AND RUNNING GEAR:	
● FUEL TANK VOLUME [L]	300
● TRANSMISSION DRIVE	HYDRAULIC
ENGINE	YAMZ-236 BK-1
DIMENSIONS AND WEIGHT WITH 6 M HEADER:	
● LENGTH [M]	10.390
● WIDTH [M]	6.480
● HEIGHT [M]	4.000
● WEIGHT WITH 6 M HEADER [KG]	16280

SELF-PROPELLED FORAGE HARVESTER

SELF-PROPELLED FORAGE HARVESTER AGROMASH KSK WITH THE CENTRALLY LOCATED CAB AND HYDRAULIC TRANSMISSION IS INTENDED FOR CUTTING GREEN GRASS AND PICKING UP WINDROWS, HARVESTING MAIZE AND OTHER TALL CROPS WITH SIMULTANEOUS CHOPPING AND LOADING OF THE CHOPPED MATERIAL INTO THE FORAGE WAGON. THE COMBINE CAN BE USED IN ANY SOIL-CLIMATIC ZONES. IN COMBINATION WITH SPECIAL IMPLEMENTS THE COMBINE IS SUITABLE FOR SILAGE CROP HARVESTING.



SPECIFICATIONS

AGROMASH	KSK 11
TYPE	FORAGE HARVESTER
PERFORMANCE [T/H]	MIN 120 (SILAGE HARVESTING)
ENGINE	SISU
RATED POWER [kW (HP)]	265 (360)
FUEL TANK VOLUME [L]	600
DRIVE AXLE	MVG-12
TRANSMISSION DRIVE	HYDRAULIC
LENGTH [M]	7.960
WIDTH [M]	5.96
HEIGHT [M]	3.85/4.75
WEIGHT WITH 5 M HEADER [KG]	12480
NUMBER OF CUTTING STEPS [M]	4
EFFECTIVE CUTTING LENGTH [MM]	5-20
FIELD SPEED [KM/H]	UP TO 12
TRANSPORT SPEED [KM/H]	UP TO 30
CHOPPING DRUM DIAMETER [MM]	630
CHOPPING DRUM WIDTH [MM]	750
CUTTING WIDTH OF GRASS HEADER [M]	5.0
CUTTING WIDTH OF TALL CROP HEADER [M]	3.4





RUSSIA

AGROMASH-HOLDING

RUSSIA 121099, MOSCOW
NOVINSKI BLVD. 11

MAILING ADDRESS
RUSSIA 125040, MOSCOW
VERCHNAYA STR. 34

PHONE/FAX: +7 (495) 580-70-10
E-MAIL: AMH-INFO@AGROMH.COM

REGIONAL SALES

NORTH
RUSSIA 600026, VLADIMIR
TRAKTORNAYA ST. 43
PHONE: +7 (4922) 53-21-29
E-MAIL: SVR1@VLADTRAKTOR.RU

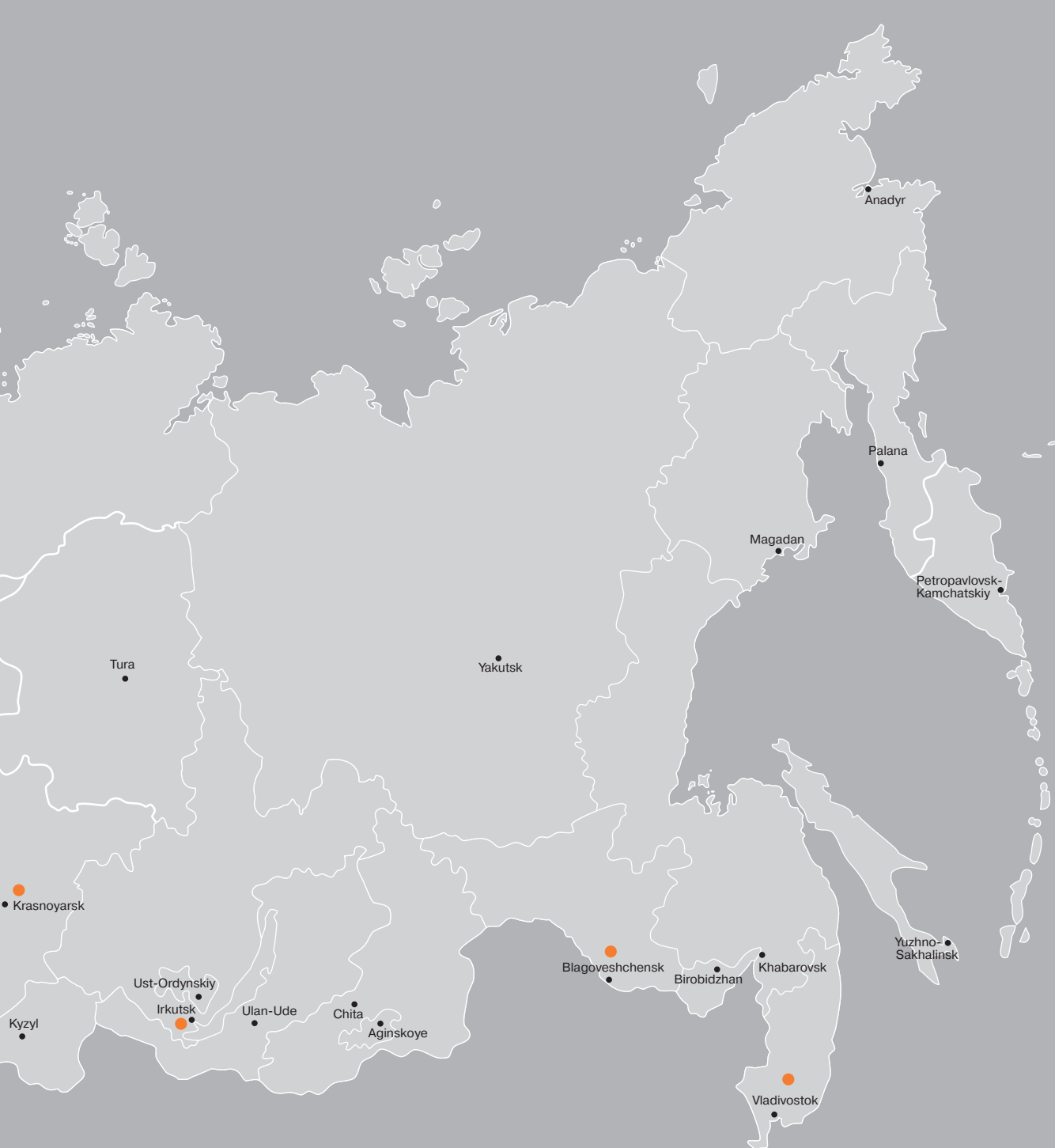
SIBERIA
RUSSIA 660049, KRASNODARSK
PROFSOUYZOV ST. 3
PHONE: +7 (3912) 59-56-01
E-MAIL: ULANDV08@MAIL.RU

URALS DISTRICT
RUSSIA 620072, EKATERINBURG
40 LETIYA KOMSOMOLA ST. 38, LETTER L, OFFICE 423
PHONE: +7 (343) 228-39-30
E-MAIL: APAKLIN@LIST.RU

SOUTH
RUSSIA 420027, VOLGOGRAD
DZERZHINSKOGO SQ. 1
PHONE: +7 (8442) 74-60-74
E-MAIL: LYSAKOV@VGTZ.COM

VOLGA DISTRICT
RUSSIA 428027, CHEBOKSARY
KHUZANGAYA ST. 26B
PHONE: +7 (8352) 30-43-26
E-MAIL: R_SEMENOV@CHEBAMH.COM

CENTER
RUSSIA 125040, MOSCOW
VERCHNAYA STR. 34
PHONE: +7 (495) 580-70-10 EXT. 201,
E-MAIL: I_LUKIN@AGROMH.COM



CIS COUNTRIES

REGIONAL MANAGERS

KAZAKHSTAN
RUSSIA 125040, MOSCOW
VERCHNAYA STR. 34
PHONE/FAX: +7 (495) 580-70-10
E-MAIL: A_GDMAYUNOV@AGROMH.COM

CENTRAL AND MIDDLE ASIA
RUSSIA 125040, MOSCOW
VERCHNAYA STR. 34
PHONE/FAX: +7 (495) 580-70-10
E-MAIL: LEA@AGROMH.COM

EUROPE
RUSSIA 125040, MOSCOW
VERCHNAYA STR. 34
PHONE/FAX: +7 (495) 580-70-10
E-MAIL: S_ERYOMENKO@AGROMH.COM

AGENCIES IN CIS COUNTRIES

UKRAINE
000 AGROMASH-HOLDING UKRAINE
62371 UKRAINE, KHARKOVSKAYA OBL,
DERGACHEVSKI RAYON, POS. PODOVKI,
DZERZHINSKOGO ST. 5A
PHONE: +380 57 783-67-02

UZBEKISTAN
IP 000 AGROMASH-HOLDING-TASHKENT
100011, REPUBLIC OF UZBEKISTAN, TASHKENT,
SHAIKHANTAKHURSKI RAYON, ABAYA ST. 4A
PHONE: +998 71 244-60-74 E-MAIL: UAMH@MAIL.RU

KAZAKHSTAN
TOO AGROMASH-HOLDING-RK
010000, ASTANA, MANASA ST. 3, OFFICE 509
PHONE: +7 717 235-26-22 E-MAIL: AMHRK@MAIL.RU

AZERBAIJAN
000 AGROMASH-HOLDING-BAKU
REPUBLIC OF AZERBAIJAN, AZ 1130, BAKU,
BINAGADINSKI RAYON,
VOSTOCHNO-BINAGADINSKI POSELOK
PHONE: +994 12 411-18-52
E-MAIL: AQROMASH@MAIL.RU

TURKMENISTAN
KHO AGROMASH-TURKMENISTAN
744 000, TURKMENISTAN, ASHKHABAD, 1945 ST., 9B
PHONE: +993 12 47-43-61

KYRGYZSTAN
OAO AGROMASH-HOLDING-BISHKEK
720001 BISHKEK, ISANOVA ST. 65
PHONE: +996 77 213-58-53, E-MAIL: BIRGA@LIST.RU

SOUVENIRS

AGROMASH-HOLDING OFFERS A WIDE RANGE OF BRANDED SOUVENIRS
SOUVENIRS CAN BE ORDERED BY PHONE +7 495 580 7010 OR BY E-MAIL: EXPO@AGROMH.COM



